

THE **ART** OF
ELECTRONICS

PAUL HOROWITZ
WINFIELD HILL

**THIRD
EDITION**

The Art of Electronics

Third Edition

At long last, here is the thoroughly revised and updated, and long-anticipated, third edition of the hugely successful *The Art of Electronics*. Widely accepted as the best single authoritative text and reference on electronic circuit design, both analog and digital, the first two editions were translated into eight languages, and sold more than a million copies worldwide. The art of electronics is explained by stressing the methods actually used by circuit designers – a combination of some basic laws, rules of thumb, and a nonmathematical treatment that encourages understanding why and how a circuit works.

Paul Horowitz is a Research Professor of Physics and of Electrical Engineering at Harvard University, where in 1974 he originated the Laboratory Electronics course from which emerged *The Art of Electronics*. In addition to his work in circuit design and electronic instrumentation, his research interests have included observational astrophysics, x-ray and particle microscopy, and optical interferometry. He is one of the pioneers of the search for intelligent life beyond Earth (SETI). He is the author of some 200 scientific articles and reports, has consulted widely for industry and government, and is the designer of numerous scientific and photographic instruments.

Winfield Hill is by inclination an electronics circuit-design guru. After dropping out of the Chemical Physics graduate program at Harvard University, and obtaining an E.E. degree, he began his engineering career at Harvard's Electronics Design Center. After 7 years of learning electronics at Harvard he founded Sea Data Corporation, where he spent 16 years designing instruments for Physical Oceanography. In 1988 he was recruited by Edwin Land to join the Rowland Institute for Science. The institute subsequently merged with Harvard University in 2003. As director of the institute's Electronics Engineering Lab he has designed some 500 scientific instruments. Recent interests include high-voltage RF (to 15 kV), high-current pulsed electronics (to 1200 A), low-noise amplifiers (to sub-nV and pA), and MOSFET pulse generators.

This page intentionally left blank

THE ART OF ELECTRONICS

Third Edition

Paul Horowitz HARVARD UNIVERSITY

Winfield Hill ROWLAND INSTITUTE AT HARVARD

CAMBRIDGE
UNIVERSITY PRESS

32 Avenue of the Americas, New York, NY 10013-2473, USA

Cambridge University Press is part of the University of Cambridge.

It furthers the University's mission by disseminating knowledge in the pursuit of education, learning, and research at the highest international levels of excellence.

www.cambridge.org

Information on this title: www.cambridge.org/9780521809269

© Cambridge University Press, 1980, 1989, 2015

This publication is in copyright. Subject to statutory exception and to the provisions of relevant collective licensing agreements, no reproduction of any part may take place without the written permission of Cambridge University Press.

First published 1980

Second edition 1989

Third edition 2015

7th printing 2016 with corrections

Printed in the United States of America

A catalog record for this publication is available from the British Library.

ISBN 978-0-521-80926-9 Hardback

Cambridge University Press has no responsibility for the persistence or accuracy of URLs for external or third-party Internet websites referred to in this publication and does not guarantee that any content on such websites is, or will remain, accurate or appropriate.

To Vida and Ava

This page intentionally left blank

In Memoriam: Jim Williams, 1948–2011

This page intentionally left blank

CONTENTS

List of Tables	xxii	1.6.5 Regulators	34
Preface to the First Edition	xxv	1.6.6 Circuit applications of diodes	35
Preface to the Second Edition	xxvii	1.6.7 Inductive loads and diode protection	38
Preface to the Third Edition	xxix	1.6.8 Interlude: inductors as friends	39
		1.7 Impedance and reactance	40
ONE: Foundations	1	1.7.1 Frequency analysis of reactive circuits	41
1.1 Introduction	1	1.7.2 Reactance of inductors	44
1.2 Voltage, current, and resistance	1	1.7.3 Voltages and currents as complex numbers	44
1.2.1 Voltage and current	1	1.7.4 Reactance of capacitors and inductors	45
1.2.2 Relationship between voltage and current: resistors	3	1.7.5 Ohm's law generalized	46
1.2.3 Voltage dividers	7	1.7.6 Power in reactive circuits	47
1.2.4 Voltage sources and current sources	8	1.7.7 Voltage dividers generalized	48
1.2.5 Thévenin equivalent circuit	9	1.7.8 <i>RC</i> highpass filters	48
1.2.6 Small-signal resistance	12	1.7.9 <i>RC</i> lowpass filters	50
1.2.7 An example: "It's too hot!"	13	1.7.10 <i>RC</i> differentiators and integrators in the frequency domain	51
1.3 Signals	13	1.7.11 Inductors versus capacitors	51
1.3.1 Sinusoidal signals	14	1.7.12 Phasor diagrams	51
1.3.2 Signal amplitudes and decibels	14	1.7.13 "Poles" and decibels per octave	52
1.3.3 Other signals	15	1.7.14 Resonant circuits	52
1.3.4 Logic levels	17	1.7.15 <i>LC</i> filters	54
1.3.5 Signal sources	17	1.7.16 Other capacitor applications	54
1.4 Capacitors and ac circuits	18	1.7.17 Thévenin's theorem generalized	55
1.4.1 Capacitors	18	1.8 Putting it all together – an AM radio	55
1.4.2 <i>RC</i> circuits: <i>V</i> and <i>I</i> versus time	21	1.9 Other passive components	56
1.4.3 Differentiators	25	1.9.1 Electromechanical devices: switches	56
1.4.4 Integrators	26	1.9.2 Electromechanical devices: relays	59
1.4.5 Not quite perfect. . .	28	1.9.3 Connectors	59
1.5 Inductors and transformers	28	1.9.4 Indicators	61
1.5.1 Inductors	28	1.9.5 Variable components	63
1.5.2 Transformers	30	1.10 A parting shot: confusing markings and itty-bitty components	64
1.6 Diodes and diode circuits	31	1.10.1 Surface-mount technology: the joy and the pain	65
1.6.1 Diodes	31		
1.6.2 Rectification	31		
1.6.3 Power-supply filtering	32		
1.6.4 Rectifier configurations for power supplies	33		

Additional Exercises for Chapter 1	66	2.6.1 Regulated power supply	123
Review of Chapter 1	68	2.6.2 Temperature controller	123
TWO: Bipolar Transistors	71	2.6.3 Simple logic with transistors and diodes	123
2.1 Introduction	71	Additional Exercises for Chapter 2	124
2.1.1 First transistor model: current amplifier	72	Review of Chapter 2	126
2.2 Some basic transistor circuits	73	THREE: Field-Effect Transistors	131
2.2.1 Transistor switch	73	3.1 Introduction	131
2.2.2 Switching circuit examples	75	3.1.1 FET characteristics	131
2.2.3 Emitter follower	79	3.1.2 FET types	134
2.2.4 Emitter followers as voltage regulators	82	3.1.3 Universal FET characteristics	136
2.2.5 Emitter follower biasing	83	3.1.4 FET drain characteristics	137
2.2.6 Current source	85	3.1.5 Manufacturing spread of FET characteristics	138
2.2.7 Common-emitter amplifier	87	3.1.6 Basic FET circuits	140
2.2.8 Unity-gain phase splitter	88	3.2 FET linear circuits	141
2.2.9 Transconductance	89	3.2.1 Some representative JFETs: a brief tour	141
2.3 Ebers–Moll model applied to basic transistor circuits	90	3.2.2 JFET current sources	142
2.3.1 Improved transistor model: transconductance amplifier	90	3.2.3 FET amplifiers	146
2.3.2 Consequences of the Ebers–Moll model: rules of thumb for transistor design	91	3.2.4 Differential amplifiers	152
2.3.3 The emitter follower revisited	93	3.2.5 Oscillators	155
2.3.4 The common-emitter amplifier revisited	93	3.2.6 Source followers	156
2.3.5 Biasing the common-emitter amplifier	96	3.2.7 FETs as variable resistors	161
2.3.6 An aside: the perfect transistor	99	3.2.8 FET gate current	163
2.3.7 Current mirrors	101	3.3 A closer look at JFETs	165
2.3.8 Differential amplifiers	102	3.3.1 Drain current versus gate voltage	165
2.4 Some amplifier building blocks	105	3.3.2 Drain current versus drain-source voltage: output conductance	166
2.4.1 Push–pull output stages	106	3.3.3 Transconductance versus drain current	168
2.4.2 Darlington connection	109	3.3.4 Transconductance versus drain voltage	170
2.4.3 Bootstrapping	111	3.3.5 JFET capacitance	170
2.4.4 Current sharing in paralleled BJTs	112	3.3.6 Why JFET (versus MOSFET) amplifiers?	170
2.4.5 Capacitance and Miller effect	113	3.4 FET switches	171
2.4.6 Field-effect transistors	115	3.4.1 FET analog switches	171
2.5 Negative feedback	115	3.4.2 Limitations of FET switches	174
2.5.1 Introduction to feedback	116	3.4.3 Some FET analog switch examples	182
2.5.2 Gain equation	116	3.4.4 MOSFET logic switches	184
2.5.3 Effects of feedback on amplifier circuits	117	3.5 Power MOSFETs	187
2.5.4 Two important details	120	3.5.1 High impedance, thermal stability	187
2.5.5 Two examples of transistor amplifiers with feedback	121	3.5.2 Power MOSFET switching parameters	192
2.6 Some typical transistor circuits	123		

3.5.3	Power switching from logic levels	192	4.5	A detailed look at selected op-amp circuits	254
3.5.4	Power switching cautions	196	4.5.1	Active peak detector	254
3.5.5	MOSFETs versus BJTs as high-current switches	201	4.5.2	Sample-and-hold	256
3.5.6	Some power MOSFET circuit examples	202	4.5.3	Active clamp	257
3.5.7	IGBTs and other power semiconductors	207	4.5.4	Absolute-value circuit	257
3.6	MOSFETs in linear applications	208	4.5.5	A closer look at the integrator	257
3.6.1	High-voltage piezo amplifier	208	4.5.6	A circuit cure for FET leakage	259
3.6.2	Some depletion-mode circuits	209	4.5.7	Differentiators	260
3.6.3	Paralleling MOSFETs	212	4.6	Op-amp operation with a single power supply	261
3.6.4	Thermal runaway	214	4.6.1	Biasing single-supply ac amplifiers	261
Review of Chapter 3		219	4.6.2	Capacitive loads	264
			4.6.3	“Single-supply” op-amps	265
FOUR: Operational Amplifiers		223	4.6.4	Example: voltage-controlled oscillator	267
4.1	Introduction to op-amps – the “perfect component”	223	4.6.5	VCO implementation: through-hole versus surface-mount	268
4.1.1	Feedback and op-amps	223	4.6.6	Zero-crossing detector	269
4.1.2	Operational amplifiers	224	4.6.7	An op-amp table	270
4.1.3	The golden rules	225	4.7	Other amplifiers and op-amp types	270
4.2	Basic op-amp circuits	225	4.8	Some typical op-amp circuits	274
4.2.1	Inverting amplifier	225	4.8.1	General-purpose lab amplifier	274
4.2.2	Noninverting amplifier	226	4.8.2	Stuck-node tracer	276
4.2.3	Follower	227	4.8.3	Load-current-sensing circuit	277
4.2.4	Difference amplifier	227	4.8.4	Integrating suntan monitor	278
4.2.5	Current sources	228	4.9	Feedback amplifier frequency compensation	280
4.2.6	Integrators	230	4.9.1	Gain and phase shift versus frequency	281
4.2.7	Basic cautions for op-amp circuits	231	4.9.2	Amplifier compensation methods	282
4.3	An op-amp smorgasbord	232	4.9.3	Frequency response of the feedback network	284
4.3.1	Linear circuits	232	Additional Exercises for Chapter 4		287
4.3.2	Nonlinear circuits	236	Review of Chapter 4		288
4.3.3	Op-amp application: triangle-wave oscillator	239	FIVE: Precision Circuits		292
4.3.4	Op-amp application: pinch-off voltage tester	240	5.1	Precision op-amp design techniques	292
4.3.5	Programmable pulse-width generator	241	5.1.1	Precision versus dynamic range	292
4.3.6	Active lowpass filter	241	5.1.2	Error budget	293
4.4	A detailed look at op-amp behavior	242	5.2	An example: the millivoltmeter, revisited	293
4.4.1	Departure from ideal op-amp performance	243	5.2.1	The challenge: 10 mV, 1%, 10 M Ω , 1.8 V single supply	293
4.4.2	Effects of op-amp limitations on circuit behavior	249	5.2.2	The solution: precision RRIO current source	294
4.4.3	Example: sensitive millivoltmeter	253	5.3	The lessons: error budget, unspecified parameters	295
4.4.4	Bandwidth and the op-amp current source	254			

5.4	Another example: precision amplifier with null offset	297	5.11.3	Selecting an auto-zero op-amp	338	
	5.4.1	Circuit description	297	5.11.4	Auto-zero miscellany	340
5.5	A precision-design error budget	298	5.12	Designs by the masters: Agilent's accurate DMMs	342	
	5.5.1	Error budget	299	5.12.1	It's <i>impossible!</i>	342
5.6	Component errors	299	5.12.2	Wrong – it <i>is</i> possible!	342	
	5.6.1	Gain-setting resistors	300	5.12.3	Block diagram: a simple plan	343
	5.6.2	The holding capacitor	300	5.12.4	The 34401A 6.5-digit front end	343
	5.6.3	Nulling switch	300	5.12.5	The 34420A 7.5-digit frontend	344
5.7	Amplifier input errors	301	5.13	Difference, differential, and instrumentation amplifiers: introduction	347	
	5.7.1	Input impedance	302	5.14	Difference amplifier	348
	5.7.2	Input bias current	302	5.14.1	Basic circuit operation	348
	5.7.3	Voltage offset	304	5.14.2	Some applications	349
	5.7.4	Common-mode rejection	305	5.14.3	Performance parameters	352
	5.7.5	Power-supply rejection	306	5.14.4	Circuit variations	355
	5.7.6	Nulling amplifier: input errors	306	5.15	Instrumentation amplifier	356
5.8	Amplifier output errors	307	5.15.1	A first (but naive) guess	357	
	5.8.1	Slew rate: general considerations	307	5.15.2	Classic three-op-amp instrumentation amplifier	357
	5.8.2	Bandwidth and settling time	308	5.15.3	Input-stage considerations	358
	5.8.3	Crossover distortion and output impedance	309	5.15.4	A “roll-your-own” instrumentation amplifier	359
	5.8.4	Unity-gain power buffers	311	5.15.5	A riff on robust input protection	362
	5.8.5	Gain error	312	5.16	Instrumentation amplifier miscellany	362
	5.8.6	Gain nonlinearity	312	5.16.1	Input current and noise	362
	5.8.7	Phase error and “active compensation”	314	5.16.2	Common-mode rejection	364
5.9	RRIO op-amps: the good, the bad, and the ugly	315	5.16.3	Source impedance and CMRR	365	
	5.9.1	Input issues	316	5.16.4	EMI and input protection	365
	5.9.2	Output issues	316	5.16.5	Offset and CMRR trimming	366
5.10	Choosing a precision op-amp	319	5.16.6	Sensing at the load	366	
	5.10.1	“Seven precision op-amps”	319	5.16.7	Input bias path	366
	5.10.2	Number per package	322	5.16.8	Output voltage range	366
	5.10.3	Supply voltage, signal range	322	5.16.9	Application example: current source	367
	5.10.4	Single-supply operation	322	5.16.10	Other configurations	368
	5.10.5	Offset voltage	323	5.16.11	Chopper and auto-zero instrumentation amplifiers	370
	5.10.6	Voltage noise	323	5.16.12	Programmable gain instrumentation amplifiers	370
	5.10.7	Bias current	325	5.16.13	Generating a differential output	372
	5.10.8	Current noise	326	5.17	Fully differential amplifiers	373
	5.10.9	CMRR and PSRR	328	5.17.1	Differential amplifiers: basic concepts	374
	5.10.10	GBW, f_T , slew rate and “ m ,” and settling time	328	5.17.2	Differential amplifier application example: wideband analog link	380
	5.10.11	Distortion	329	5.17.3	Differential-input ADCs	380
	5.10.12	“Two out of three isn't bad”: creating a perfect op-amp	332	5.17.4	Impedance matching	382
5.11	Auto-zeroing (chopper-stabilized) amplifiers	333				
	5.11.1	Auto-zero op-amp properties	334			
	5.11.2	When to use auto-zero op-amps	338			

5.17.5	Differential amplifier selection criteria	383	7.2.4	Timing with digital counters	465
	Review of Chapter 5	388		Review of Chapter 7	470
SIX: Filters		391	EIGHT: Low-Noise Techniques		473
6.1	Introduction	391	8.1	“Noise”	473
6.2	Passive filters	391	8.1.1	Johnson (Nyquist) noise	474
6.2.1	Frequency response with <i>RC</i> filters	391	8.1.2	Shot noise	475
6.2.2	Ideal performance with <i>LC</i> filters	393	8.1.3	1/ <i>f</i> noise (flicker noise)	476
6.2.3	Several simple examples	393	8.1.4	Burst noise	477
6.2.4	Enter active filters: an overview	396	8.1.5	Band-limited noise	477
6.2.5	Key filter performance criteria	399	8.1.6	Interference	478
6.2.6	Filter types	400	8.2	Signal-to-noise ratio and noise figure	478
6.2.7	Filter implementation	405	8.2.1	Noise power density and bandwidth	479
6.3	Active-filter circuits	406	8.2.2	Signal-to-noise ratio	479
6.3.1	VCVS circuits	407	8.2.3	Noise figure	479
6.3.2	VCVS filter design using our simplified table	407	8.2.4	Noise temperature	480
6.3.3	State-variable filters	410	8.3	Bipolar transistor amplifier noise	481
6.3.4	Twin-T notch filters	414	8.3.1	Voltage noise, e_n	481
6.3.5	Allpass filters	415	8.3.2	Current noise i_n	483
6.3.6	Switched-capacitor filters	415	8.3.3	BJT voltage noise, revisited	484
6.3.7	Digital signal processing	418	8.3.4	A simple design example: loudspeaker as microphone	486
6.3.8	Filter miscellany	422	8.3.5	Shot noise in current sources and emitter followers	487
	Additional Exercises for Chapter 6	422	8.4	Finding e_n from noise-figure specifications	489
	Review of Chapter 6	423	8.4.1	Step 1: NF versus I_C	489
SEVEN: Oscillators and Timers		425	8.4.2	Step 2: NF versus R_s	489
7.1	Oscillators	425	8.4.3	Step 3: getting to e_n	490
7.1.1	Introduction to oscillators	425	8.4.4	Step 4: the spectrum of e_n	491
7.1.2	Relaxation oscillators	425	8.4.5	The spectrum of i_n	491
7.1.3	The classic oscillator–timer chip: the 555	428	8.4.6	When operating current is not your choice	491
7.1.4	Other relaxation-oscillator ICs	432	8.5	Low-noise design with bipolar transistors	492
7.1.5	Sinewave oscillators	435	8.5.1	Noise-figure example	492
7.1.6	Quartz-crystal oscillators	443	8.5.2	Charting amplifier noise with e_n and i_n	493
7.1.7	Higher stability: TCXO, OCXO, and beyond	450	8.5.3	Noise resistance	494
7.1.8	Frequency synthesis: DDS and PLL	451	8.5.4	Charting comparative noise	495
7.1.9	Quadrature oscillators	453	8.5.5	Low-noise design with BJTs: two examples	495
7.1.10	Oscillator “jitter”	457	8.5.6	Minimizing noise: BJTs, FETs, and transformers	496
7.2	Timers	457	8.5.7	A design example: 40 μ “lightning detector” preamp	497
7.2.1	Step-triggered pulses	458	8.5.8	Selecting a low-noise bipolar transistor	500
7.2.2	Monostable multivibrators	461	8.5.9	An extreme low-noise design challenge	505
7.2.3	A monostable application: limiting pulse width and duty cycle	465			

8.6	Low-noise design with JFETS	509	8.11.13	Test fixture for compensation and calibration	554
8.6.1	Voltage noise of JFETS	509	8.11.14	A final remark	555
8.6.2	Current noise of JFETS	511	8.12	Noise measurements and noise sources	555
8.6.3	Design example: low-noise wideband JFET “hybrid” amplifiers	512	8.12.1	Measurement without a noise source	555
8.6.4	Designs by the masters: SR560 low-noise preamplifier	512	8.12.2	An example: transistor-noise test circuit	556
8.6.5	Selecting low-noise JFETS	515	8.12.3	Measurement with a noise source	556
8.7	Charting the bipolar–FET shootout	517	8.12.4	Noise and signal sources	558
8.7.1	What about MOSFETs?	519	8.13	Bandwidth limiting and rms voltage measurement	561
8.8	Noise in differential and feedback amplifiers	520	8.13.1	Limiting the bandwidth	561
8.9	Noise in operational amplifier circuits	521	8.13.2	Calculating the integrated noise	563
8.9.1	Guide to Table 8.3: choosing low-noise op-amps	525	8.13.3	Op-amp “low-frequency noise” with asymmetric filter	564
8.9.2	Power-supply rejection ratio	533	8.13.4	Finding the $1/f$ corner frequency	566
8.9.3	Wrapup: choosing a low-noise op-amp	533	8.13.5	Measuring the noise voltage	567
8.9.4	Low-noise instrumentation amplifiers and video amplifiers	533	8.13.6	Measuring the noise current	569
8.9.5	Low-noise hybrid op-amps	534	8.13.7	Another way: roll-your-own $fA/\sqrt{\text{Hz}}$ instrument	571
8.10	Signal transformers	535	8.13.8	Noise potpourri	574
8.10.1	A low-noise wideband amplifier with transformer feedback	536	8.14	Signal-to-noise improvement by bandwidth narrowing	574
8.11	Noise in transimpedance amplifiers	537	8.14.1	Lock-in detection	575
8.11.1	Summary of the stability problem	537	8.15	Power-supply noise	578
8.11.2	Amplifier input noise	538	8.15.1	Capacitance multiplier	578
8.11.3	The $e_n C$ noise problem	538	8.16	Interference, shielding, and grounding	579
8.11.4	Noise in the transresistance amplifier	539	8.16.1	Interfering signals	579
8.11.5	An example: wideband JFET photodiode amplifier	540	8.16.2	Signal grounds	582
8.11.6	Noise versus gain in the transimpedance amplifier	540	8.16.3	Grounding between instruments	583
8.11.7	Output bandwidth limiting in the transimpedance amplifier	542		Additional Exercises for Chapter 8	588
8.11.8	Composite transimpedance amplifiers	543		Review of Chapter 8	590
8.11.9	Reducing input capacitance: bootstrapping the transimpedance amplifier	547		NINE: Voltage Regulation and Power Conversion	594
8.11.10	Isolating input capacitance: cascading the transimpedance amplifier	548	9.1	Tutorial: from zener to series-pass linear regulator	595
8.11.11	Transimpedance amplifiers with capacitive feedback	552	9.1.1	Adding feedback	596
8.11.12	Scanning tunneling microscope preamplifier	553	9.2	Basic linear regulator circuits with the classic 723	598
			9.2.1	The 723 regulator	598
			9.2.2	In defense of the beleaguered 723	600
			9.3	Fully integrated linear regulators	600
			9.3.1	Taxonomy of linear regulator ICs	601
			9.3.2	Three-terminal fixed regulators	601

9.3.3	Three-terminal adjustable regulators	602	9.7.1	The ac-to-dc input stage	660
9.3.4	317-style regulator: application hints	604	9.7.2	The dc-to-dc converter	662
9.3.5	317-style regulator: circuit examples	608	9.8	A real-world switcher example	665
9.3.6	Lower-dropout regulators	610	9.8.1	Switchers: top-level view	665
9.3.7	True low-dropout regulators	611	9.8.2	Switchers: basic operation	665
9.3.8	Current-reference 3-terminal regulator	611	9.8.3	Switchers: looking more closely	668
9.3.9	Dropout voltages compared	612	9.8.4	The “reference design”	671
9.3.10	Dual-voltage regulator circuit example	613	9.8.5	Wrapup: general comments on line-powered switching power supplies	672
9.3.11	Linear regulator choices	613	9.8.6	When to use switchers	672
9.3.12	Linear regulator idiosyncrasies	613	9.9	Inverters and switching amplifiers	673
9.3.13	Noise and ripple filtering	619	9.10	Voltage references	674
9.3.14	Current sources	620	9.10.1	Zener diode	674
9.4	Heat and power design	623	9.10.2	Bandgap (V_{BE}) reference	679
9.4.1	Power transistors and heatsinking	624	9.10.3	JFET pinch-off (V_P) reference	680
9.4.2	Safe operating area	627	9.10.4	Floating-gate reference	681
9.5	From ac line to unregulated supply	628	9.10.5	Three-terminal precision references	681
9.5.1	ac-line components	629	9.10.6	Voltage reference noise	682
9.5.2	Transformer	632	9.10.7	Voltage references: additional Comments	683
9.5.3	dc components	633	9.11	Commercial power-supply modules	684
9.5.4	Unregulated split supply – on the bench!	634	9.12	Energy storage: batteries and capacitors	686
9.5.5	Linear versus switcher: ripple and noise	635	9.12.1	Battery characteristics	687
9.6	Switching regulators and dc–dc converters	636	9.12.2	Choosing a battery	688
9.6.1	Linear versus switching	636	9.12.3	Energy storage in capacitors	688
9.6.2	Switching converter topologies	638	9.13	Additional topics in power regulation	690
9.6.3	Inductorless switching converters	638	9.13.1	Overvoltage crowbars	690
9.6.4	Converters with inductors: the basic non-isolated topologies	641	9.13.2	Extending input-voltage range	693
9.6.5	Step-down (buck) converter	642	9.13.3	Foldback current limiting	693
9.6.6	Step-up (boost) converter	647	9.13.4	Outboard pass transistor	695
9.6.7	Inverting converter	648	9.13.5	High-voltage regulators	695
9.6.8	Comments on the non-isolated converters	649		Review of Chapter 9	699
9.6.9	Voltage mode and current mode	651		TEN: Digital Logic	703
9.6.10	Converters with transformers: the basic designs	653	10.1	Basic logic concepts	703
9.6.11	The flyback converter	655	10.1.1	Digital versus analog	703
9.6.12	Forward converters	656	10.1.2	Logic states	704
9.6.13	Bridge converters	659	10.1.3	Number codes	705
9.7	Ac-line-powered (“offline”) switching converters	660	10.1.4	Gates and truth tables	708
			10.1.5	Discrete circuits for gates	711
			10.1.6	Gate-logic example	712
			10.1.7	Assertion-level logic notation	713
			10.2	Digital integrated circuits: CMOS and Bipolar (TTL)	714
			10.2.1	Catalog of common gates	715
			10.2.2	IC gate circuits	717
			10.2.3	CMOS and bipolar (“TTL”) characteristics	718

10.2.4	Three-state and open-collector devices	720	11.3	An example: pseudorandom byte generator	770
10.3	Combinational logic	722	11.3.1	How to make pseudorandom bytes	771
10.3.1	Logic identities	722	11.3.2	Implementation in standard logic	772
10.3.2	Minimization and Karnaugh maps	723	11.3.3	Implementation with programmable logic	772
10.3.3	Combinational functions available as ICs	724	11.3.4	Programmable logic – HDL entry	775
10.4	Sequential logic	728	11.3.5	Implementation with a microcontroller	777
10.4.1	Devices with memory: flip-flops	728	11.4	Advice	782
10.4.2	Clocked flip-flops	730	11.4.1	By <i>Technologies</i>	782
10.4.3	Combining memory and gates: sequential logic	734	11.4.2	By <i>User Communities</i>	785
10.4.4	Synchronizer	737		Review of Chapter 11	787
10.4.5	Monostable multivibrator	739			
10.4.6	Single-pulse generation with flip-flops and counters	739			
10.5	Sequential functions available as integrated circuits	740	TWELVE: Logic Interfacing		790
10.5.1	Latches and registers	740	12.1	CMOS and TTL logic interfacing	790
10.5.2	Counters	741	12.1.1	Logic family chronology – a brief history	790
10.5.3	Shift registers	744	12.1.2	Input and output characteristics	794
10.5.4	Programmable logic devices	745	12.1.3	Interfacing between logic families	798
10.5.5	Miscellaneous sequential functions	746	12.1.4	Driving digital logic inputs	802
10.6	Some typical digital circuits	748	12.1.5	Input protection	804
10.6.1	Modulo- n counter: a timing example	748	12.1.6	Some comments about logic inputs	805
10.6.2	Multiplexed LED digital display	751	12.1.7	Driving digital logic from comparators or op-amps	806
10.6.3	An n -pulse generator	752	12.2	An aside: probing digital signals	808
10.7	Micropower digital design	753	12.3	Comparators	809
10.7.1	Keeping CMOS low power	754	12.3.1	Outputs	810
10.8	Logic pathology	755	12.3.2	Inputs	812
10.8.1	dc problems	755	12.3.3	Other parameters	815
10.8.2	Switching problems	756	12.3.4	Other cautions	816
10.8.3	Congenital weaknesses of TTL and CMOS	758	12.4	Driving external digital loads from logic levels	817
	Additional Exercises for Chapter 10	760	12.4.1	Positive loads: direct drive	817
	Review of Chapter 10	762	12.4.2	Positive loads: transistor assisted	820
			12.4.3	Negative or ac loads	821
ELEVEN: Programmable Logic Devices		764	12.4.4	Protecting power switches	823
11.1	A brief history	764	12.4.5	nMOS LSI interfacing	826
11.2	The hardware	765	12.5	Optoelectronics: emitters	829
11.2.1	The basic PAL	765	12.5.1	Indicators and LEDs	829
11.2.2	The PLA	768	12.5.2	Laser diodes	834
11.2.3	The FPGA	768	12.5.3	Displays	836
11.2.4	The configuration memory	769	12.6	Optoelectronics: detectors	840
11.2.5	Other programmable logic devices	769			
11.2.6	The software	769			

12.6.1	Photodiodes and phototransistors	841	13.2.8	PWM as digital-to-analog converter	888
12.6.2	Photomultipliers	842	13.2.9	Frequency-to-voltage converters	890
12.7	Optocouplers and relays	843	13.2.10	Rate multiplier	890
12.7.1	I: Phototransistor output optocouplers	844	13.2.11	Choosing a DAC	891
12.7.2	II: Logic-output optocouplers	844	13.3	Some DAC application examples	891
12.7.3	III: Gate driver optocouplers	846	13.3.1	General-purpose laboratory source	891
12.7.4	IV: Analog-oriented optocouplers	847	13.3.2	Eight-channel source	893
12.7.5	V: Solid-state relays (transistor output)	848	13.3.3	Nanoamp wide-compliance bipolarity current source	894
12.7.6	VI: Solid-state relays (triac/SCR output)	849	13.3.4	Precision coil driver	897
12.7.7	VII: ac-input optocouplers	851	13.4	Converter linearity – a closer look	899
12.7.8	Interrupters	851	13.5	Analog-to-digital converters	900
12.8	Optoelectronics: fiber-optic digital links	852	13.5.1	Digitizing: aliasing, sampling rate, and sampling depth	900
12.8.1	TOSLINK	852	13.5.2	ADC Technologies	902
12.8.2	Versatile Link	854	13.6	ADCs I: Parallel (“flash”) encoder	903
12.8.3	ST/SC glass-fiber modules	855	13.6.1	Modified flash encoders	903
12.8.4	Fully integrated high-speed fiber-transceiver modules	855	13.6.2	Driving flash, folding, and RF ADCs	904
12.9	Digital signals and long wires	856	13.6.3	Undersampling flash-converter example	907
12.9.1	On-board interconnections	856	13.7	ADCs II: Successive approximation	908
12.9.2	Intercard connections	858	13.7.1	A simple SAR example	909
12.10	Driving Cables	858	13.7.2	Variations on successive approximation	909
12.10.1	Coaxial cable	858	13.7.3	An A/D conversion example	910
12.10.2	The right way – I: Far-end termination	860	13.8	ADCs III: integrating	912
12.10.3	Differential-pair cable	864	13.8.1	Voltage-to-frequency conversion	912
12.10.4	RS-232	871	13.8.2	Single-slope integration	914
12.10.5	Wrapup	874	13.8.3	Integrating converters	914
Review of Chapter 12		875	13.8.4	Dual-slope integration	914
			13.8.5	Analog switches in conversion applications (a detour)	916
THIRTEEN : Digital meets Analog		879	13.8.6	Designs by the masters: Agilent’s world-class “multislope” converters	918
13.1	Some preliminaries	879	13.9	ADCs IV: delta–sigma	922
13.1.1	The basic performance parameters	879	13.9.1	A simple delta–sigma for our suntan monitor	922
13.1.2	Codes	880	13.9.2	Demystifying the delta–sigma converter	923
13.1.3	Converter errors	880	13.9.3	$\Delta\Sigma$ ADC and DAC	923
13.1.4	Stand-alone versus integrated	880	13.9.4	The $\Delta\Sigma$ process	924
13.2	Digital-to-analog converters	881	13.9.5	An aside: “noise shaping”	927
13.2.1	Resistor-string DACs	881	13.9.6	The bottom line	928
13.2.2	$R-2R$ ladder DACs	882	13.9.7	A simulation	928
13.2.3	Current-steering DACs	883	13.9.8	What about DACs?	930
13.2.4	Multiplying DACs	884			
13.2.5	Generating a voltage output	885			
13.2.6	Six DACs	886			
13.2.7	Delta–sigma DACs	888			

13.9.9	Pros and Cons of $\Delta\Sigma$ oversampling converters	931	13.14.8	A “hybrid digital filter”	983
13.9.10	Idle tones	932		Additional Exercises for Chapter 13	984
13.9.11	Some delta–sigma application examples	932		Review of Chapter 13	985
13.10	ADCs: choices and tradeoffs	938	FOURTEEN: Computers, Controllers, and Data Links 989		
13.10.1	Delta–sigma and the competition	938	14.1	Computer architecture: CPU and data bus	990
13.10.2	Sampling versus averaging ADCs: noise	940	14.1.1	CPU	990
13.10.3	Micropower A/D converters	941	14.1.2	Memory	991
13.11	Some unusual A/D and D/A converters	942	14.1.3	Mass memory	991
13.11.1	ADE7753 multifunction ac power metering IC	943	14.1.4	Graphics, network, parallel, and serial ports	992
13.11.2	AD7873 touchscreen digitizer	944	14.1.5	Real-time I/O	992
13.11.3	AD7927 ADC with sequencer	945	14.1.6	Data bus	992
13.11.4	AD7730 precision bridge-measurement subsystem	945	14.2	A computer instruction set	993
13.12	Some A/D conversion system examples	946	14.2.1	Assembly language and machine language	993
13.12.1	Multiplexed 16-channel data-acquisition system	946	14.2.2	Simplified “x86” instruction set	993
13.12.2	Parallel multichannel successive-approximation data-acquisition system	950	14.2.3	A programming example	996
13.12.3	Parallel multichannel delta–sigma data-acquisition system	952	14.3	Bus signals and interfacing	997
13.13	Phase-locked loops	955	14.3.1	Fundamental bus signals: data, address, strobe	997
13.13.1	Introduction to phase-locked loops	955	14.3.2	Programmed I/O: data out	998
13.13.2	PLL components	957	14.3.3	Programming the XY vector display	1000
13.13.3	PLL design	960	14.3.4	Programmed I/O: data in	1001
13.13.4	Design example: frequency multiplier	961	14.3.5	Programmed I/O: status registers	1002
13.13.5	PLL capture and lock	964	14.3.6	Programmed I/O: command registers	1004
13.13.6	Some PLL applications	966	14.3.7	Interrupts	1005
13.13.7	Wrapup: noise and jitter rejection in PLLs	974	14.3.8	Interrupt handling	1006
13.14	Pseudorandom bit sequences and noise generation	974	14.3.9	Interrupts in general	1008
13.14.1	Digital-noise generation	974	14.3.10	Direct memory access	1010
13.14.2	Feedback shift register sequences	975	14.3.11	Summary of PC104/ISA 8-bit bus signals	1012
13.14.3	Analog noise generation from maximal-length sequences	977	14.3.12	The PC104 as an embedded single-board computer	1013
13.14.4	Power spectrum of shift-register sequences	977	14.4	Memory types	1014
13.14.5	Low-pass filtering	979	14.4.1	Volatile and non-volatile memory	1014
13.14.6	Wrapup	981	14.4.2	Static versus dynamic RAM	1015
13.14.7	“True” random noise generators	982	14.4.3	Static RAM	1016
			14.4.4	Dynamic RAM	1018
			14.4.5	Nonvolatile memory	1021
			14.4.6	Memory wrapup	1026
			14.5	Other buses and data links: overview	1027
			14.6	Parallel buses and data links	1028
			14.6.1	Parallel chip “bus” interface – an example	1028

14.6.2	Parallel chip data links – two high-speed examples	1030	15.7	Design example 5: stabilized mechanical platform	1077
14.6.3	Other parallel computer buses	1030	15.8	Peripheral ICs for microcontrollers	1078
14.6.4	Parallel peripheral buses and data links	1031	15.8.1	Peripherals with direct connection	1079
14.7	Serial buses and data links	1032	15.8.2	Peripherals with SPI connection	1082
14.7.1	SPI	1032	15.8.3	Peripherals with I ² C connection	1084
14.7.2	I ² C 2-wire interface (“TWT”)	1034	15.8.4	Some important hardware constraints	1086
14.7.3	Dallas–Maxim “1-wire” serial interface	1035	15.9	Development environment	1086
14.7.4	JTAG	1036	15.9.1	Software	1086
14.7.5	Clock-be-gone: clock recovery	1037	15.9.2	Real-time programming constraints	1088
14.7.6	SATA, eSATA, and SAS	1037	15.9.3	Hardware	1089
14.7.7	PCI Express	1037	15.9.4	The Arduino Project	1092
14.7.8	Asynchronous serial (RS-232, RS-485)	1038	15.10	Wrapup	1092
14.7.9	Manchester coding	1039	15.10.1	How expensive are the tools?	1092
14.7.10	Biphase coding	1041	15.10.2	When to use microcontrollers	1093
14.7.11	RLL binary: bit stuffing	1041	15.10.3	How to select a microcontroller	1094
14.7.12	RLL coding: 8b/10b and others	1041	15.10.4	A parting shot	1094
14.7.13	USB	1042		Review of Chapter 15	1095
14.7.14	FireWire	1042		APPENDIX A: Math Review	1097
14.7.15	Controller Area Network (CAN)	1043	A.1	Trigonometry, exponentials, and logarithms	1097
14.7.16	Ethernet	1045	A.2	Complex numbers	1097
14.8	Number formats	1046	A.3	Differentiation (Calculus)	1099
14.8.1	Integers	1046	A.3.1	Derivatives of some common functions	1099
14.8.2	Floating-point numbers	1047	A.3.2	Some rules for combining derivatives	1100
	Review of Chapter 14	1049	A.3.3	Some examples of differentiation	1100
FIFTEEN: Microcontrollers		1053		APPENDIX B: How to Draw Schematic Diagrams	1101
15.1	Introduction	1053	B.1	General principles	1101
15.2	Design example 1: suntan monitor (V)	1054	B.2	Rules	1101
15.2.1	Implementation with a microcontroller	1054	B.3	Hints	1103
15.2.2	Microcontroller code (“firmware”)	1056	B.4	A humble example	1103
15.3	Overview of popular microcontroller families	1059		APPENDIX C: Resistor Types	1104
15.3.1	On-chip peripherals	1061	C.1	Some history	1104
15.4	Design example 2: ac power control	1062	C.2	Available resistance values	1104
15.4.1	Microcontroller implementation	1062	C.3	Resistance marking	1105
15.4.2	Microcontroller code	1064	C.4	Resistor types	1105
15.5	Design example 3: frequency synthesizer	1065	C.5	Confusion derby	1105
15.5.1	Microcontroller code	1067		APPENDIX D: Thévenin’s Theorem	1107
15.6	Design example 4: thermal controller	1069	D.1	The proof	1107
15.6.1	The hardware	1070			
15.6.2	The control loop	1074			
15.6.3	Microcontroller code	1075			

D.1.1	Two examples – voltage dividers	1107	I.3	Recording analog-format broadcast or cable television	1135	
D.2	Norton’s theorem	1108	I.4	Digital television: what is it?	1136	
D.3	Another example	1108	I.5	Digital television: broadcast and cable delivery	1138	
D.4	Millman’s theorem	1108	I.6	Direct satellite television	1139	
APPENDIX E: LC Butterworth Filters			1109	I.7	Digital video streaming over internet	1140
E.1	Lowpass filter	1109	I.8	Digital cable: premium services and conditional access	1141	
E.2	Highpass filter	1109	I.8.1	Digital cable: video-on-demand	1141	
E.3	Filter examples	1109	I.8.2	Digital cable: switched broadcast	1142	
APPENDIX F: Load Lines			1112	I.9	Recording digital television	1142
F.1	An example	1112	I.10	Display technology	1142	
F.2	Three-terminal devices	1112	I.11	Video connections: analog and digital	1143	
F.3	Nonlinear devices	1113	APPENDIX J: SPICE Primer			1146
APPENDIX G: The Curve Tracer			1115	J.1	Setting up ICAP SPICE	1146
APPENDIX H: Transmission Lines and Impedance Matching			1116	J.2	Entering a Diagram	1146
H.1	Some properties of transmission lines	1116	J.3	Running a simulation	1146	
H.1.1	Characteristic impedance	1116	J.3.1	Schematic entry	1146	
H.1.2	Termination: pulses	1117	J.3.2	Simulation: frequency sweep	1147	
H.1.3	Termination: sinusoidal signals	1120	J.3.3	Simulation: input and output waveforms	1147	
H.1.4	Loss in transmission lines	1121	J.4	Some final points	1148	
H.2	Impedance matching	1122	J.5	A detailed example: exploring amplifier distortion	1148	
H.2.1	Resistive (lossy) broadband matching network	1123	J.6	Expanding the parts database	1149	
H.2.2	Resistive attenuator	1123	APPENDIX K: “Where Do I Go to Buy Electronic Goodies?”			1150
H.2.3	Transformer (lossless) broadband matching network	1124	APPENDIX L: Workbench Instruments and Tools			1152
H.2.4	Reactive (lossless) narrowband matching networks	1125	APPENDIX M: Catalogs, Magazines, Databases			1153
H.3	Lumped-element delay lines and pulse-forming networks	1126	APPENDIX N: Further Reading and References			1154
H.4	Epilogue: ladder derivation of characteristic impedance	1127	APPENDIX O: The Oscilloscope			1158
H.4.1	First method: terminated line	1127	O.1	The analog oscilloscope	1158	
H.4.2	Second method: semi-infinite line	1127	O.1.1	Vertical	1158	
H.4.3	Postscript: lumped-element delay lines	1128	O.1.2	Horizontal	1158	
APPENDIX I: Television: A Compact Tutorial			1131	O.1.3	Triggering	1159
I.1	Television: video plus audio	1131	O.1.4	Hints for beginners	1160	
I.1.1	The audio	1131	O.1.5	Probes	1160	
I.1.2	The video	1132	O.1.6	Grounds	1161	
I.2	Combining and sending the audio + video: modulation	1133	O.1.7	Other analog scope features	1161	
			O.2	The digital oscilloscope	1162	

O.2.1	What's different?	1162	APPENDIX P: Acronyms and Abbreviations	1166
O.2.2	Some cautions	1164	Index	1171

LIST OF TABLES

1.1. Representative Diodes.	32	8.4. Noise Integrals.	564
2.1. Representative Bipolar Transistors.	74	8.5. Auto-zero Noise Measurements.	569
2.2. Bipolar Power Transistors.	106	9.1. 7800-style Fixed Regulators.	602
3.1. JFET Mini-table.	141	9.2. Three-terminal Adjustable Voltage Regulators (LM317-style).	605
3.2. Selected Fast JFET-input Op-amps.	155	9.3. Low-dropout Linear Voltage Regulators.	614
3.3. Analog Switches.	176	9.4. Selected Charge-pump Converters.	640
3.4a. MOSFETs – Small n -channel (to 250 V), and p -channel (to 100 V).	188	9.5a. Voltage-mode Integrated Switching Regulators.	653
3.4b. n -channel Power MOSFETs, 55 V to 4500 V.	189	9.5b. Selected Current-mode Integrated Switching Regulators.	654
3.5. MOSFET Switch Candidates.	206	9.6. External-switch Controllers.	658
3.6. Depletion-mode n -channel MOSFETs.	210	9.7. Shunt (2-terminal) Voltage References.	677
3.7. Junction Field-Effect Transistors (JFETs).	217	9.8. Series (3-terminal) Voltage References.	678
3.8. Low-side MOSFET Gate Drivers.	218	9.9. Battery Choices.	689
4.1. Op-amp Parameters.	245	9.10. Energy Storage: Capacitor Versus Battery.	690
4.2a. Representative Operational Amplifiers.	271	10.1. Selected Logic Families.	706
4.2b. Monolithic Power and High-voltage Op-amps.	272	10.2. 4-bit Signed Integers in Three Systems of Representation.	707
5.1. Millivoltmeter Candidate Op-amps.	296	10.3. Standard Logic Gates.	716
5.2. Representative Precision Op-amps.	302	10.4. Logic Identities.	722
5.3. Nine Low-input-current Op-amps.	303	10.5. Selected Counter ICs.	742
5.4. Representative High-speed Op-amps.	310	10.6. Selected Reset/Supervisors.	756
5.5. “Seven” Precision Op-amps: High Voltage.	320	12.1. Representative Comparators.	812
5.6. Chopper and Auto-zero Op-amps.	335	12.2. Comparators.	813
5.7. Selected Difference Amplifiers.	353	12.3. Power Logic Registers.	819
5.8. Selected Instrumentation Amplifiers	363	12.4. A Few Protected MOSFETs.	825
5.9. Selected Programmable-gain Instrumentation Amplifiers.	370	12.5. Selected High-side Switches.	826
5.10. Selected Differential Amplifiers.	375	12.6. Selected Panel-mount LEDs.	832
6.1. Time-domain Performance Comparison for Lowpass Filters.	406	13.1. Six Digital-to-analog Converters.	889
6.2. VCVS Lowpass Filters.	408	13.2. Selected Digital-to-analog Converters.	893
7.1. 555-type Oscillators.	430	13.3. Multiplying DACs.	894
7.2. Oscillator Types.	452	13.4. Selected Fast ADCs.	905
7.3. Monostable Multivibrators.	462	13.5. Successive-approximation ADCs.	910
7.4. “Type 123” Monostable Timing.	463	13.6. Selected Micropower ADCs.	916
8.1a. Low-noise Bipolar Transistors (BJTs).	501	13.7. 4053-style SPDT Switches.	917
8.1b. Dual Low-noise BJTs.	502	13.8. Agilent’s Multislope III ADCs.	921
8.2. Low-noise Junction FETs (JFETs).	516	13.9. Selected Delta-sigma ADCs.	935
8.3a. Low-noise BJT-input Op-amps.	522	13.10. Audio Delta-sigma ADCs.	937
8.3b. Low-noise FET-input Op-amps.	523	13.11. Audio ADCs.	939
8.3c. High-speed Low-noise Op-amps.	524	13.12. Speciality ADCs.	942

13.13. Phase-locked Loop ICs.	972	14.3. Common Buses and Data Links.	1029
13.14. Single-tap LFSRs.	976	14.4. RS-232 Signals.	1039
13.15. LFSRs with Length a Multiple of 8.	976	14.5. ASCII Codes.	1040
14.1. Simplified x86 Instruction Set.	994	C.1. Selected Resistor Types.	1106
14.2. PC104/ISA Bus Signals.	1013	E.1. Butterworth Lowpass Filters.	1110
		H.1. Pi and T Attenuators.	1124

This page intentionally left blank

PREFACE TO THE FIRST EDITION

This volume is intended as an electronic circuit design textbook and reference book; it begins at a level suitable for those with no previous exposure to electronics and carries the reader through to a reasonable degree of proficiency in electronic circuit design. We have used a straightforward approach to the essential ideas of circuit design, coupled with an in-depth selection of topics. We have attempted to combine the pragmatic approach of the practicing physicist with the quantitative approach of the engineer, who wants a thoroughly evaluated circuit design.

This book evolved from a set of notes written to accompany a one-semester course in laboratory electronics at Harvard. That course has a varied enrollment – undergraduates picking up skills for their eventual work in science or industry, graduate students with a field of research clearly in mind, and advanced graduate students and post-doctoral researchers who suddenly find themselves hampered by their inability to “do electronics.”

It soon became clear that existing textbooks were inadequate for such a course. Although there are excellent treatments of each electronics specialty, written for the planned sequence of a four-year engineering curriculum or for the practicing engineer, those books that attempt to address the whole field of electronics seem to suffer from excessive detail (the handbook syndrome), from oversimplification (the cookbook syndrome), or from poor balance of material. Much of the favorite pedagogy of beginning textbooks is quite unnecessary and, in fact, is not used by practicing engineers, while useful circuitry and methods of analysis in daily use by circuit designers lie hidden in application notes, engineering journals, and hard-to-get data books. In other words, there is a tendency among textbook writers to represent the theory, rather than the art, of electronics.

We collaborated in writing this book with the specific intention of combining the discipline of a circuit design engineer with the perspective of a practicing experimental physicist and teacher of electronics. Thus, the treatment in this book reflects our philosophy that electronics, as currently practiced, is basically a simple art, a combination of some basic laws, rules of thumb, and a large bag of tricks. For these reasons we have omitted entirely the

usual discussions of solid-state physics, the h -parameter model of transistors, and complicated network theory, and reduced to a bare minimum the mention of load lines and the s -plane. The treatment is largely nonmathematical, with strong encouragement of circuit brainstorming and mental (or, at most, back-of-the-envelope) calculation of circuit values and performance.

In addition to the subjects usually treated in electronics books, we have included the following:

- an easy-to-use transistor model;
- extensive discussion of useful subcircuits, such as current sources and current mirrors;
- single-supply op-amp design;
- easy-to-understand discussions of topics on which practical design information is often difficult to find: op-amp frequency compensation, low-noise circuits, phase-locked loops, and precision linear design;
- simplified design of active filters, with tables and graphs;
- a section on noise, shielding, and grounding;
- a unique graphical method for streamlined low-noise amplifier analysis;
- a chapter on voltage references and regulators, including constant current supplies;
- a discussion of monostable multivibrators and their idiosyncrasies;
- a collection of digital logic pathology, and what to do about it;
- an extensive discussion of interfacing to logic, with emphasis on the new NMOS and PMOS LSI;
- a detailed discussion of A/D and D/A conversion techniques;
- a section on digital noise generation;
- a discussion of minicomputers and interfacing to data buses, with an introduction to assembly language;
- a chapter on microprocessors, with actual design examples and discussion – how to design them into instruments, and how to make them do what you want;
- a chapter on construction techniques: prototyping, printed circuit boards, instrument design;

- a simplified way to evaluate high-speed switching circuits;
- a chapter on scientific measurement and data processing: what you can measure and how accurately, and what to do with the data;
- bandwidth narrowing methods made clear: signal averaging, multichannel scaling, lock-in amplifiers, and pulse-height analysis;
- amusing collections of “bad circuits,” and collections of “circuit ideas”;
- useful appendixes on how to draw schematic diagrams, IC generic types, *LC* filter design, resistor values, oscilloscopes, mathematics review, and others;
- tables of diodes, transistors, FETs, op-amps, comparators, regulators, voltage references, microprocessors, and other devices, generally listing the characteristics of both the most popular and the best types.

Throughout we have adopted a philosophy of naming names, often comparing the characteristics of competing devices for use in any circuit, and the advantages of alternative circuit configurations. Example circuits are drawn with real device types, not black boxes. The overall intent is to bring the reader to the point of understanding clearly the choices one makes in designing a circuit – how to choose circuit configurations, device types, and parts values. The use of largely nonmathematical circuit design techniques does not result in circuits that cut corners or compromise performance or reliability. On the contrary, such techniques enhance one’s understanding of the real choices and compromises faced in engineering a circuit and represent the best approach to good circuit design.

This book can be used for a full-year electronic circuit design course at the college level, with only a minimum mathematical prerequisite; namely, some acquaintance with trigonometric and exponential functions, and preferably a bit of differential calculus. (A short review of complex numbers and derivatives is included as an appendix.) If the less essential sections are omitted, it can serve as the text for a one-semester course (as it does at Harvard).

A separately available laboratory manual, *Laboratory Manual for the Art of Electronics* (Horowitz and Robinson, 1981), contains twenty-three lab exercises, together with reading and problem assignments keyed to the text.

To assist the reader in navigation, we have designated with open boxes in the margin those sections within each chapter that we feel can be safely passed over in an abbreviated reading. For a one-semester course it would probably be wise to omit, in addition, the materials of Chapter 5 (first half), 7, 12, 13, 14, and possibly 15, as explained in the introductory paragraphs of those chapters.

We would like to thank our colleagues for their thoughtful comments and assistance in the preparation of the manuscript, particularly Mike Aronson, Howard Berg, Dennis Crouse, Carol Davis, David Griesinger, John Hagen, Tom Hayes, Peter Horowitz, Bob Kline, Costas Pappaliolios, Jay Sage, and Bill Vetterling. We are indebted to Eric Hieber and Jim Mobley, and to Rhona Johnson and Ken Werner of Cambridge University Press, for their imaginative and highly professional work.

*Paul Horowitz
Winfield Hill
April 1980*

PREFACE TO THE SECOND EDITION

Electronics, perhaps more than any other field of technology, has enjoyed an explosive development in the last four decades. Thus it was with some trepidation that we attempted, in 1980, to bring out a definitive volume teaching the art of the subject. By “art” we meant the kind of mastery that comes from an intimate familiarity with real circuits, actual devices, and the like, rather than the more abstract approach often favored in textbooks on electronics. Of course, in a rapidly evolving field, such a nuts-and-bolts approach has its hazards – most notably a frighteningly quick obsolescence.

The pace of electronics technology did not disappoint us! Hardly was the ink dry on the first edition before we felt foolish reading our words about “the classic [2Kbyte] 2716 EPROM... with a price tag of about \$25.” They’re so classic you can’t even get them anymore, having been replaced by EPROMs 64 times as large, and costing less than half the price! Thus a major element of this revision responds to improved devices and methods – completely rewritten chapters on microcomputers and microprocessors (using the IBM PC and the 68008) and substantially revised chapters on digital electronics (including PLDs, and the new HC and AC logic families), on op-amps and precision design (reflecting the availability of excellent FET-input op-amps), and on construction techniques (including CAD/CAM). Every table has been revised, some substantially; for example, in Table 4.1 (operational amplifiers) only 65% of the original 120 entries survived, with 135 new op-amps added.

We have used this opportunity to respond to readers’ suggestions and to our own experiences using and teaching from the first edition. Thus we have rewritten the chapter on FETs (it was too complicated) and repositioned it before the chapter on op-amps (which are increasingly of FET construction). We have added a new chapter on low-power and micropower design (both analog and digital), a field both important and neglected. Most of the remaining chapters have been extensively revised. We have added many new tables, including A/D and D/A converters, digital logic components, and low-power devices, and throughout the book we have expanded the number of figures. The

book now contains 78 tables (available separately as *The Horowitz and Hill Component Selection Tables*) and over 1000 figures.

Throughout the revision we have strived to retain the feeling of informality and easy access that made the first edition so successful and popular, both as reference and text. We are aware of the difficulty students often experience when approaching electronics for the first time: the field is densely interwoven, and there is no path of learning that takes you, by logical steps, from neophyte to broadly competent designer. Thus we have added extensive cross-referencing throughout the text; in addition, we have expanded the separate *Laboratory Manual* into a *Student Manual (Student Manual for The Art of Electronics, by Thomas C. Hayes and Paul Horowitz)*, complete with additional worked examples of circuit designs, explanatory material, reading assignments, laboratory exercises, and solutions to selected problems. By offering a student supplement, we have been able to keep this volume concise and rich with detail, as requested by our many readers who use the volume primarily as a reference work.

We hope this new edition responds to all our readers’ needs – both students and practicing engineers. We welcome suggestions and corrections, which should be addressed directly to Paul Horowitz, Physics Department, Harvard University, Cambridge, MA 02138.

In preparing this new edition, we are appreciative of the help we received from Mike Aronson and Brian Matthews (AOX, Inc.), John Greene (University of Cape Town), Jeremy Avigad and Tom Hayes (Harvard University), Peter Horowitz (EVI, Inc.), Don Stern, and Owen Walker. We thank Jim Mobley for his excellent copyediting, Sophia Prybylski and David Tranah of Cambridge University Press for their encouragement and professional dedication, and the never-sleeping typesetters at Rosenlaur Publishing Services, Inc. for their masterful composition in \TeX .

Finally, in the spirit of modern jurisprudence, we remind you to read the legal notice here appended.

*Paul Horowitz
Winfield Hill
March 1989*

Legal notice

In this book we have attempted to teach the techniques of electronic design, using circuit examples and data that we believe to be accurate. However, the examples, data, and other information are intended solely as teaching aids and should not be used in any particular application without independent testing and verification by the person making the application. Independent testing and verification are especially important in any application in which incorrect functioning could result in personal injury or damage to property.

For these reasons, we make no warranties, express or implied, that the examples, data, or other infor-

mation in this volume are free of error, that they are consistent with industry standards, or that they will meet the requirements for any particular application. **THE AUTHORS AND PUBLISHER EXPRESSLY DISCLAIM THE IMPLIED WARRANTIES OF MERCHANTABILITY AND OF FITNESS FOR ANY PARTICULAR PURPOSE**, even if the authors have been advised of a particular purpose, and even if a particular purpose is indicated in the book. The authors and publisher also disclaim all liability for direct, indirect, incidental, or consequential damages that result from any use of the examples, data, or other information in this book.

PREFACE TO THE THIRD EDITION

Moore's Law continues to assert itself, unabated, since the publication of the second edition a quarter century ago. In this new third (and final!) edition we have responded to this upheaval with major enhancements:

- an emphasis on devices and circuits for *A/D* and *D/A conversion* (Chapter 13), because embedded microcontrollers are everywhere
- illustration of specialized peripheral ICs for use with microcontrollers (Chapter 15)
- detailed discussions of logic family choices, and of interfacing logic signals to the real world (Chapters 10 and 12)
- greatly expanded treatment of important topics in the essential analog portion of instrument design:
 - precision circuit design (Chapter 5)
 - low-noise design (Chapter 8)
 - power switching (Chapters 3, 9, and 12)
 - power conversion (Chapter 9)

And we have added many entirely new topics, including:

- digital audio and video (including cable and satellite TV)
- transmission lines
- circuit simulation with SPICE
- transimpedance amplifiers
- depletion-mode MOSFETs
- protected MOSFETs
- high-side drivers
- quartz crystal properties and oscillators
- a full exploration of JFETs
- high-voltage regulators
- optoelectronics
- power logic registers
- delta-sigma converters
- precision multislope conversion
- memory technologies
- serial buses
- illustrative “Designs by the Masters”

In this new edition we have responded, also, to the reality that previous editions have been enthusiastically embraced by the community of practicing circuit designers, even though *The Art of Electronics* (now 35 years in print) originated as a course textbook. So we've continued the “how we do it” approach to circuit design; and we've ex-

panded the depth of treatment, while (we hope) retaining the easy access and explanation of basics. At the same time we have split off some of the specifically course-related teaching and lab material into a separate *Learning the Art of Electronics* volume, a substantial expansion of the previous edition's companion *Student Manual for The Art of Electronics*.¹

Digital oscilloscopes have made it easy to capture, annotate, and combine measured waveforms, a capability we have exploited by including some 90 'scope screenshots illustrating the behavior of working circuits. Along with those doses of reality, we have included (in tables and graphs) substantial quantities of highly useful measured data – such as transistor noise and gain characteristics (e_n , i_n , $r_{bb'}$; h_{fe} , g_m , g_{oss}), analog switch characteristics (R_{ON} , Q_{inj} , capacitance), op-amp input and output characteristics (e_n and i_n over frequency, input common-mode range, output swing, auto-zero recovery, distortion, available packages), and approximate prices (!) – the sort of data often buried or omitted in datasheets but which you need (and don't have the time to measure) when designing circuits.

We've worked diligently, over the 20 years it has taken to prepare this edition, to include important circuit design information, in the form of some 350 graphs, 50 photographs, and 87 tables (listing more than 1900 active components), the last enabling intelligent choice of circuit components by listing essential characteristics (both specified and measured) of available parts.

Because of the significant expansion of topics and depth of detail, we've had to leave behind some topics that were treated in the second edition,² notwithstanding the use of larger pages, more compact fonts, and most figures sized to fit in a single column. Some additional related material that we had hoped to include in this volume (on real-world properties of components, and advanced topics in BJTs, FETs, op-amps, and power control) will instead be published in a forthcoming companion volume, *The Art*

¹ Both by Hayes, T. and Horowitz, P., Cambridge University Press, 1989 and 2016.

² Which, however, will continue to be available as an e-book.

of *Electronics: The x-Chapters*. References in this volume to those x-chapter sections and figures are set in italics. A newly updated `artofelectronics.com` website will provide a home for a continuation of the previous edition's collections of *Circuit ideas* and *Bad circuits*; it is our hope that it will become a community, also, for a lively electronic circuit forum.

As always, we welcome corrections and suggestions (and, of course, fan mail), which can be sent to `horowitz@physics.harvard.edu` or to `hill@rowland.harvard.edu`.

With gratitude. Where to start, in thanking our invaluable colleagues? Surely topping the list is David Tranah, our indefatigable editor at the Cambridge University Press mother-ship, our linchpin, helpful \LaTeX pert, wise advisor of all things bookish, and (would you believe?) *composer*! This guy slogged through 1,905 pages of marked-up text, retrofitting the \LaTeX source files with corrections from multiple personalities, then entering a few thousand index entries, and making it all work with its 1,500+ linked figures and tables. And then putting up with a couple of fussy authors. We are totally indebted to David. We owe him a pint of ale.

We are grateful to Jim Macarthur, circuit designer extraordinaire, for his careful reading of chapter drafts, and invariably helpful suggestions for improvement; we adopted every one. Our colleague Peter Lu taught us the delights of Adobe Illustrator, and appeared at a moment's notice when we went off the rails; the book's figures are testament to the quality of his tutoring. And our always-entertaining colleague Jason Gallicchio generously contributed his master Mathematica talents to reveal graphically the properties of delta-sigma conversion, nonlinear control, filter functions; he left his mark, also, in the microcontroller chapter, contributing both wisdom and code.

For their many helpful contributions we thank Bob Adams, Mike Burns, Steve Cerwin, Jesse Colman, Michael Covington, Doug Daskocil, Jon Hagen, Tom Hayes, Phil Hobbs, Peter Horowitz, George Kontopidis, Maggie McFee, Curtis Mead, Ali Mehmed, Angel Peterchev, Jim Phillips, Marco Sartore, Andrew Speck, Jim Thompson, Jim van Zee, GuYeon Wei, John Willison, Jonathan Wolff, John Woodgate, and Woody Yang. We thank also others whom (we're sure) we've here overlooked, with apologies for the omission. Additional contributors to the book's content (circuits, inspired web-based tools, unusual measurements, etc., from the likes of Uwe Beis, Tom Bruhns, and John Larkin) are referenced throughout the book in the relevant text.

Simon Capelin has kept us out of the doldrums with his unflagging encouragement and his apparent inability to scold us for missed deadlines (our contract called for delivery of the finished manuscript in December... of 1994! We're only 20 years late). In the production chain we are indebted to our project manager Peggy Rote, our copy editor Vicki Danahy, and a cast of unnamed graphic artists who converted our pencil circuit sketches into beautiful vector graphics.

We remember fondly our late colleague and friend Jim Williams for wonderful insider stories of circuit failures and circuit conquests, and for his take-no-prisoners approach to precision circuit design. His no-bullshit attitude is a model for us all.

And finally, we are forever indebted to our loving, supportive, and ever-tolerant spouses Vida and Ava, who suffered through decades of abandonment as we obsessed over every detail of our second encore.

A note on the tools. Tables were assembled in Microsoft Excel, and graphical data was plotted with Igor Pro; both were then beautified with Adobe Illustrator, with text and annotations in the sans-serif Helvetica Neue LT typeface. Oscilloscope screenshots are from our trusty Tektronix TDS3044 and 3054 "lunchboxes," taken to finishing school in Illustrator, by way of Photoshop. The photographs in the book were taken primarily with two cameras: a Calumet Horseman 6×9 cm view camera with a 105 mm Schneider Symmar $f/5.6$ lens and Kodak Plus-X 120 roll film (developed in Microdol-X 1:3 at 75°F and digitized with a Mamiya multiformat scanner), and a Canon 5D with a Scheimpflug³-enabling 90 mm tilt-shift lens. The authors composed the manuscript in \LaTeX , using the PCT \E X software from Personal TeX, Incorporated. The text is set in the Times New Roman and Helvetica typefaces, the former dating from 1931,⁴ the latter designed in 1957 by Max Miedinger.

Paul Horowitz
Winfield Hill
January 2015
Cambridge, Massachusetts

* * * * *

³ What's *that*? Google it!

⁴ Developed in response to a criticism of the antiquated typeface in *The Times* (London).

Legal Notice Addendum

In addition to the Legal Notice appended to the Preface to the Second Edition, we also make no representation regarding whether use of the examples, data, or other information in this volume might infringe others' intellectual property rights, including US and foreign patents. It is the reader's sole responsibility to ensure that he or she is not infringing any intellectual property rights, even for use which is considered to be experi-

mental in nature. By using any of the examples, data, or other information in this volume, the reader has agreed to assume all liability for any damages arising from or relating to such use, regardless of whether such liability is based on intellectual property or any other cause of action, and regardless of whether the damages are direct, indirect, incidental, consequential, or any other type of damage. The authors and publisher disclaim any such liability.

This page intentionally left blank

1.1 Introduction

The field of electronics is one of the great success stories of the 20th century. From the crude spark-gap transmitters and “cat’s-whisker” detectors at its beginning, the first half-century brought an era of vacuum-tube electronics that developed considerable sophistication and found ready application in areas such as communications, navigation, instrumentation, control, and computation. The latter half-century brought “solid-state” electronics – first as discrete transistors, then as magnificent arrays of them within “integrated circuits” (ICs) – in a flood of stunning advances that shows no sign of abating. Compact and inexpensive consumer products now routinely contain many millions of transistors in VLSI (very large-scale integration) chips, combined with elegant optoelectronics (displays, lasers, and so on); they can process sounds, images, and data, and (for example) permit wireless networking and shirt-pocket access to the pooled capabilities of the Internet. Perhaps as noteworthy is the pleasant trend toward increased performance per dollar.¹ The cost of an electronic microcircuit routinely decreases to a fraction of its initial cost as the manufacturing process is perfected (see Figure 10.87 for an example). In fact, it is often the case that the panel controls and cabinet hardware of an instrument cost more than the electronics inside.

On reading of these exciting new developments in electronics, you may get the impression that you should be able to construct powerful, elegant, yet inexpensive, little gadgets to do almost any conceivable task – all you need to know is how all these miracle devices work. If you’ve had that feeling, this book is for you. In it we have attempted to convey the excitement and know-how of the subject of electronics.

In this chapter we begin the study of the laws, rules of thumb, and tricks that constitute the art of electronics as we see it. It is necessary to begin at the beginning – with talk of voltage, current, power, and the components that make up

electronic circuits. Because you can’t touch, see, smell, or hear electricity, there will be a certain amount of abstraction (particularly in the first chapter), as well as some dependence on such visualizing instruments as oscilloscopes and voltmeters. In many ways the first chapter is also the most mathematical, in spite of our efforts to keep mathematics to a minimum in order to foster a good intuitive understanding of circuit design and behavior.

In this new edition we’ve included some intuition-aiding approximations that our students have found helpful. And, by introducing one or two “active” components ahead of their time, we’re able to jump directly into some applications that are usually impossible in a traditional textbook “passive electronics” chapter; this will keep things interesting, and even exciting.

Once we have considered the foundations of electronics, we will quickly get into the active circuits (amplifiers, oscillators, logic circuits, etc.) that make electronics the exciting field it is. The reader with some background in electronics may wish to skip over this chapter, since it assumes no prior knowledge of electronics. Further generalizations at this time would be pointless, so let’s just dive right in.

1.2 Voltage, current, and resistance

1.2.1 Voltage and current

There are two quantities that we like to keep track of in electronic circuits: voltage and current. These are usually changing with time; otherwise nothing interesting is happening.

Voltage (symbol V or sometimes E). Officially, the voltage between two points is the cost in energy (work done) required to move a unit of positive charge from the more negative point (lower potential) to the more positive point (higher potential). Equivalently, it is the energy released when a unit charge moves “downhill” from the higher potential to the lower.² Voltage is also called

¹ A mid-century computer (the IBM 650) cost \$300,000, weighed 2.7 tons, and contained 126 lamps on its control panel; in an amusing reversal, a contemporary energy-efficient lamp contains a computer of greater capability *within its base*, and costs about \$10.

² These are the *definitions*, but hardly the way circuit designers think of voltage. With time, you’ll develop a good intuitive sense of what voltage really is, in an electronic circuit. Roughly (*very roughly*) speaking, voltages are what you apply to cause currents to flow.

potential difference or *electromotive force* (EMF). The unit of measure is the *volt*, with voltages usually expressed in volts (V), kilovolts ($1 \text{ kV} = 10^3 \text{ V}$), millivolts ($1 \text{ mV} = 10^{-3} \text{ V}$), or microvolts ($1 \mu\text{V} = 10^{-6} \text{ V}$) (see the box on prefixes). A joule (J) of work is done in moving a coulomb (C) of charge through a potential difference of 1 V. (The coulomb is the unit of electric charge, and it equals the charge of approximately 6×10^{18} electrons.) For reasons that will become clear later, the opportunities to talk about nanovolts ($1 \text{ nV} = 10^{-9} \text{ V}$) and megavolts ($1 \text{ MV} = 10^6 \text{ V}$) are rare.

Current (symbol I). Current is the rate of flow of electric charge past a point. The unit of measure is the ampere, or amp, with currents usually expressed in amperes (A), milliamperes ($1 \text{ mA} = 10^{-3} \text{ A}$), microamperes ($1 \mu\text{A} = 10^{-6} \text{ A}$), nanoamperes ($1 \text{ nA} = 10^{-9} \text{ A}$), or occasionally picoamperes ($1 \text{ pA} = 10^{-12} \text{ A}$). A current of 1 amp equals a flow of 1 coulomb of charge per second. By convention, current in a circuit is considered to flow from a more positive point to a more negative point, even though the actual electron flow is in the opposite direction.

Important: from these definitions you can see that currents flow *through* things, and voltages are applied (or appear) *across* things. So you've got to say it right: always refer to the voltage *between* two points or *across* two points in a circuit. Always refer to current *through* a device or connection in a circuit.

To say something like “the voltage through a resistor ...” is nonsense. However, we do frequently speak of the voltage *at a point* in a circuit. This is always understood to mean the voltage between that point and “ground,” a common point in the circuit that everyone seems to know about. Soon you will, too.

We *generate* voltages by doing work on charges in devices such as batteries (conversion of electrochemical energy), generators (conversion of mechanical energy by magnetic forces), solar cells (photovoltaic conversion of the energy of photons), etc. We *get* currents by placing voltages across things.

At this point you may well wonder how to “see” voltages and currents. The single most useful electronic instrument is the oscilloscope, which allows you to look at voltages (or occasionally currents) in a circuit as a function of time.³ We will deal with oscilloscopes, and also voltmeters, when we discuss signals shortly; for a preview see Appendix O, and the multimeter box later in this chapter.

³ It has been said that engineers in other disciplines are envious of electrical engineers, because we have such a splendid visualization tool.

In real circuits we connect things together with wires (metallic conductors), each of which has the same voltage on it everywhere (with respect to ground, say).⁴ We mention this now so that you will realize that an actual circuit doesn't have to look like its schematic diagram, because wires can be rearranged.

Here are some simple rules about voltage and current:

1. The sum of the currents into a point in a circuit equals the sum of the currents out (conservation of charge). This is sometimes called Kirchhoff's current law (KCL). Engineers like to refer to such a point as a *node*. It follows that, for a series circuit (a bunch of two-terminal things all connected end-to-end), the current is the same everywhere.

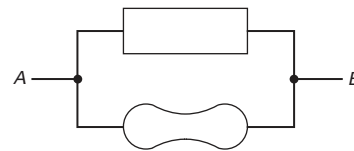


Figure 1.1. Parallel connection.

2. Things hooked in parallel (Figure 1.1) have the same voltage across them. Restated, the sum of the “voltage drops” from A to B via one path through a circuit equals the sum by any other route, and is simply the voltage between A and B . Another way to say it is that the sum of the voltage drops around any closed circuit is zero. This is Kirchhoff's voltage law (KVL).
3. The power (energy per unit time) consumed by a circuit device is

$$P = VI \quad (1.1)$$

This is simply (energy/charge) \times (charge/time). For V in volts and I in amps, P comes out in watts. A watt is a joule per second ($1 \text{ W} = 1 \text{ J/s}$). So, for example, the current flowing through a 60W lightbulb running on 120 V is 0.5 A.

Power goes into heat (usually), or sometimes mechanical work (motors), radiated energy (lamps, transmitters), or stored energy (batteries, capacitors, inductors). Managing the heat load in a complicated system (e.g., a large computer, in which many kilowatts of electrical energy are converted to heat, with the energetically insignificant by-product of a few pages of computational results) can be a crucial part of the system design.

⁴ In the domain of high frequencies or low impedances, that isn't strictly true, and we will have more to say about this later, and in Chapter 1x. For now, it's a good approximation.

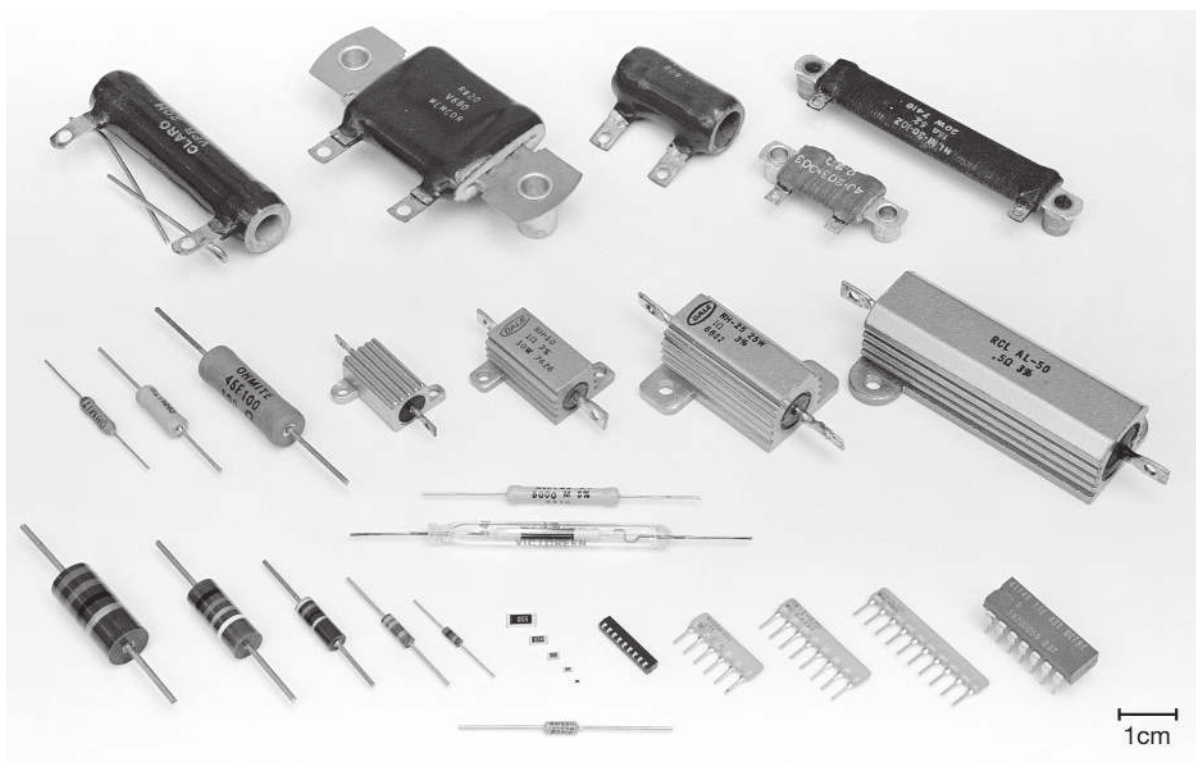


Figure 1.2. A selection of common resistor types. Top row, left to right (wirewound ceramic power resistors): 20W vitreous enamel with leads, 20W with mounting studs, 30W vitreous enamel, 5W and 20W with mounting studs. Middle row (wirewound power resistors): 1W, 3W, and 5W axial ceramic; 5W, 10W, 25W, and 50W conduction-cooled (“Dale-type”). Bottom row: 2W, 1W, $\frac{1}{2}$ W, $\frac{1}{4}$ W, and $\frac{1}{8}$ W carbon composition; surface-mount thick-film (2010, 1206, 0805, 0603, and 0402 sizes); surface-mount resistor array; 6-, 8-, and 10-pin single in-line package arrays; dual in-line package array. The resistor at bottom is the ubiquitous RN55D $\frac{1}{4}$ W, 1% metal-film type; and the pair of resistors above are Victoreen high-resistance types (glass, 2 G Ω ; ceramic, 5 G Ω).

Soon, when we deal with periodically varying voltages and currents, we will have to generalize the simple equation $P = VI$ to deal with *average* power, but it’s correct as a statement of *instantaneous* power just as it stands.

Incidentally, don’t call current “amperage”; that’s strictly bush league.⁵ The same caution will apply to the term “ohmage”⁶ when we get to resistance in the next section.

1.2.2 Relationship between voltage and current: resistors

This is a long and interesting story. It is the heart of electronics. Crudely speaking, the name of the game is to make and use gadgets that have interesting and useful I -versus- V characteristics. Resistors (I simply proportional to V),

capacitors (I proportional to rate of change of V), diodes (I flows in only one direction), thermistors (temperature-dependent resistor), photoresistors (light-dependent resistor), strain gauges (strain-dependent resistor), etc., are examples. Perhaps more interesting still are *three-terminal* devices, such as transistors, in which the current that can flow between a pair of terminals is controlled by the voltage applied to a third terminal. We will gradually get into some of these exotic devices; for now, we will start with the most mundane (and most widely used) circuit element, the resistor (Figure 1.3).



Figure 1.3. Resistor.

A. Resistance and resistors

It is an interesting fact that the current through a metallic conductor (or other partially conducting material) is proportional to the voltage across it. (In the case of wire

⁵ Unless you’re a power engineer working with giant 13kV transformers and the like – those guys are allowed to say amperage.

⁶ ... also, Dude, “ohmage” is not the preferred nomenclature: *resistance*, please.

PREFIXES

<i>Multiple</i>	<i>Prefix</i>	<i>Symbol</i>	<i>Derivation</i>
10 ²⁴	yotta	Y	end-1 of Latin alphabet, hint of Greek <i>iota</i>
10 ²¹	zetta	Z	end of Latin alphabet, hint of Greek <i>zeta</i>
10 ¹⁸	exa	E	Greek <i>hexa</i> (six: power of 1000)
10 ¹⁵	peta	P	Greek <i>penta</i> (five: power of 1000)
10 ¹²	tera	T	Greek <i>teras</i> (monster)
10 ⁹	giga	G	Greek <i>gigas</i> (giant)
10 ⁶	mega	M	Greek <i>megas</i> (great)
10 ³	kilo	k	Greek <i>khilioi</i> (thousand)
10 ⁻³	milli	m	Latin <i>milli</i> (thousand)
10 ⁻⁶	micro	μ	Greek <i>mikros</i> (small)
10 ⁻⁹	nano	n	Greek <i>nanos</i> (dwarf)
10 ⁻¹²	pico	p	from Italian/Spanish <i>piccolo/pico</i> (small)
10 ⁻¹⁵	femto	f	Danish/Norwegian <i>femten</i> (fifteen)
10 ⁻¹⁸	atto	a	Danish/Norwegian <i>atten</i> (eighteen)
10 ⁻²¹	zepto	z	end of Latin alphabet, mirrors <i>zetta</i>
10 ⁻²⁴	yocto	y	end-1 of Latin alphabet, mirrors <i>yotta</i>

These prefixes are universally used to scale units in science and engineering. Their etymological derivations are a matter of some controversy and should not be considered historically reliable. When abbreviating a unit with a prefix, the symbol for the unit follows the prefix without space. Be careful about uppercase and lowercase letters (especially m and M) in both prefix and unit: 1 mW

is a milliwatt, or one-thousandth of a watt; 1 MHz is a megahertz or 1 million hertz. In general, units are spelled with lowercase letters, even when they are derived from proper names. The unit name is not capitalized when it is spelled out and used with a prefix, only when abbreviated. Thus: hertz and kilohertz, but Hz and kHz; watt, milliwatt, and megawatt, but W, mW, and MW.

conductors used in circuits, we usually choose a thick-enough gauge of wire so that these “voltage drops” will be negligible.) This is by no means a universal law for all objects. For instance, the current through a neon bulb is a highly nonlinear function of the applied voltage (it is zero up to a critical voltage, at which point it rises dramatically). The same goes for a variety of interesting special devices – diodes, transistors, lightbulbs, etc. (If you are interested in understanding why metallic conductors behave this way, read §§4.4–4.5 in Purcell and Morin’s splendid text *Electricity and Magnetism*).

A resistor is made out of some conducting stuff (carbon, or a thin metal or carbon film, or wire of poor conductivity), with a wire or contacts at each end. It is characterized by its resistance:

$$R = V/I; \quad (1.2)$$

R is in ohms for V in volts and I in amps. This is known as Ohm’s law. Typical resistors of the most frequently used type (metal-oxide film, metal film, or carbon film) come in

values from 1 ohm ($1\ \Omega$) to about 10 megohms ($10\ M\Omega$). Resistors are also characterized by how much power they can safely dissipate (the most commonly used ones are rated at 1/4 or 1/8 W), their physical size,⁷ and by other parameters such as tolerance (accuracy), temperature coefficient, noise, voltage coefficient (the extent to which R depends on applied V), stability with time, inductance, etc. See the box on resistors, Chapter 1x, and Appendix C for further details. Figure 1.2 shows a collection of resistors, with most of the available morphologies represented.

Roughly speaking, resistors are used to convert a

⁷ The sizes of *chip resistors* and other components intended for surface mounting are specified by a four-digit size code, in which each pair of digits specifies a dimension in units of 0.010" (0.25 mm). For example, an 0805 size resistor is 2 mm × 1.25 mm, or 80 mils × 50 mils (1 mil is 0.001"); the height must be separately specified. To add confusion to this simple scheme, the four-digit size code may instead be *metric* (sometimes without saying so!), in units of 0.1 mm: thus an “0805” (English) is also a “2012” (metric).

RESISTORS

Resistors are truly ubiquitous. There are almost as many types as there are applications. Resistors are used in amplifiers as loads for active devices, in bias networks, and as feedback elements. In combination with capacitors they establish time constants and act as filters. They are used to set operating currents and signal levels. Resistors are used in power circuits to reduce voltages by dissipating power, to measure currents, and to discharge capacitors after power is removed. They are used in precision circuits to establish currents, to provide accurate voltage ratios, and to set precise gain values. In logic circuits they act as bus and line terminators and as “pullup” and “pull-down” resistors. In high-voltage circuits they are used to measure voltages and to equalize leakage currents among diodes or capacitors connected in series. In radiofrequency (RF) circuits they set the bandwidth of resonant circuits, and they are even used as coil forms for inductors.

Resistors are available with resistances from $0.0002\ \Omega$ through $10^{12}\ \Omega$, standard power ratings from 1/8 watt through 250 watts, and accuracies from 0.005% through 20%. Resistors can be made from metal films, metal-oxide films, or carbon films; from carbon-composition or

ceramic-composition moldings; from metal foil or metal wire wound on a form; or from semiconductor elements similar to field-effect transistors (FETs). The most commonly used resistor type is formed from a carbon, metal, or oxide film, and comes in two widely used “packages”: the cylindrical *axial-lead* type (typified by the generic RN55D 1% 1/4 W metal-film resistor),⁸ and the much smaller *surface-mount* “chip resistor.” These common types come in 5%, 2%, and 1% tolerances, in a standard set of values ranging from $1\ \Omega$ to $10\ \text{M}\Omega$. The 1% types have 96 values per decade, whereas the 2% and 5% types have 48 and 24 values per decade (see Appendix C). Figure 1.2 illustrates most of the common resistor packages.

Resistors are so easy to use and well behaved that they’re often taken for granted. They’re not perfect, though, and you should be aware of some of their limitations so that you won’t be surprised someday. The principal defects are variations in resistance with temperature, voltage, time, and humidity. Other defects relate to inductance (which may be serious at high frequencies), the development of thermal hot spots in power applications, or electrical noise generation in low-noise amplifiers. We treat these in the advanced Chapter 1x.

voltage to a current, and vice versa. This may sound awfully trite, but you will soon see what we mean.

B. Resistors in series and parallel

From the definition of R , some simple results follow:

1. The resistance of two resistors in series (Figure 1.4) is

$$R = R_1 + R_2. \quad (1.3)$$

By putting resistors in series, you always get a *larger* resistor.

2. The resistance of two resistors in parallel (Figure 1.5) is

$$R = \frac{R_1 R_2}{R_1 + R_2} \quad \text{or} \quad R = \frac{1}{\frac{1}{R_1} + \frac{1}{R_2}}. \quad (1.4)$$

By putting resistors in parallel, you always get a *smaller* resistor. Resistance is measured in ohms (Ω), but in practice we frequently omit the Ω symbol when referring to resistors that are more than $1000\ \Omega$ (1 k Ω). Thus, a 4.7 k Ω resistor is often referred to as a 4.7k resistor, and a 1 M Ω



Figure 1.4. Resistors in series.

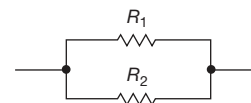


Figure 1.5. Resistors in parallel.

resistor as a 1M resistor (or 1 meg).⁹ If these preliminaries bore you, please have patience – we’ll soon get to numerous amusing applications.

Exercise 1.1. You have a 5k resistor and a 10k resistor. What is their combined resistance (a) in series and (b) in parallel?

Exercise 1.2. If you place a 1 ohm resistor across a 12 volt car battery, how much power will it dissipate?

Exercise 1.3. Prove the formulas for series and parallel resistors.

⁸ Conservatively rated at 1/8 watt in its RN55 military grade (“MIL-spec”), but rated at 1/4 watt in its CMF-55 industrial grade.

⁹ A popular “international” alternative notation replaces the decimal point with the unit multiplier, thus 4k7 or 1M0. A 2.2 Ω resistor becomes 2R2. There is an analogous scheme for capacitors and inductors.

Exercise 1.4. Show that several resistors in parallel have resistance

$$R = \frac{1}{\frac{1}{R_1} + \frac{1}{R_2} + \frac{1}{R_3} + \dots} \quad (1.5)$$

Beginners tend to get carried away with complicated algebra in designing or trying to understand electronics. Now is the time to begin learning intuition and shortcuts. Here are a couple of good tricks:

Shortcut #1 A large resistor in series (parallel) with a small resistor has the resistance of the larger (smaller) one, roughly. So you can “trim” the value of a resistor up or down by connecting a second resistor in series or parallel: to trim *up*, choose an available resistor value below the target value, then add a (much smaller) series resistor to make up the difference; to trim *down*, choose an available resistor value above the target value, then connect a (much larger) resistor in parallel. For the latter you can approximate with proportions – to lower the value of a resistor by 1%, say, put a resistor 100 times as large in parallel.¹⁰

Shortcut #2 Suppose you want the resistance of 5k in parallel with 10k. If you think of the 5k as two 10k’s in parallel, then the whole circuit is like three 10k’s in parallel. Because the resistance of n equal resistors in parallel is $1/n$ th the resistance of the individual resistors, the answer in this case is 10k/3, or 3.33k. This trick is handy because it allows you to analyze circuits quickly in your head, without distractions. We want to encourage mental designing, or at least “back-of-the-envelope” designing, for idea brainstorming.

Some more home-grown philosophy: there is a tendency among beginners to want to compute resistor values and other circuit component values to many significant places, particularly with calculators and computers that readily oblige. There are two reasons you should try to avoid falling into this habit: (a) the components themselves are of finite precision (resistors typically have tolerances of $\pm 5\%$ or $\pm 1\%$; for capacitors it’s typically $\pm 10\%$ or $\pm 5\%$; and the parameters that characterize transistors, say, frequently are known only to a factor of 2); (b) one mark of a good circuit design is insensitivity of the finished circuit to precise values of the components (there are exceptions, of course). You’ll also learn circuit intuition more quickly if you get into the habit of doing approximate calculations in your head, rather than watching meaningless numbers pop up on a calculator display. We believe strongly that reliance on formulas and equations early in your electronic circuit

education is a fine way to prevent you from understanding what’s really going on.

In trying to develop intuition about resistance, some people find it helpful to think about *conductance*, $G = 1/R$. The current through a device of conductance G bridging a voltage V is then given by $I = GV$ (Ohm’s law). A small resistance is a large conductance, with correspondingly large current under the influence of an applied voltage. Viewed in this light, the formula for parallel resistors is obvious: when several resistors or conducting paths are connected across the same voltage, the total current is the sum of the individual currents. Therefore the net conductance is simply the sum of the individual conductances, $G = G_1 + G_2 + G_3 + \dots$, which is the same as the formula for parallel resistors derived earlier.

Engineers are fond of defining reciprocal units, and they have designated as the unit of conductance the siemens ($S = 1/\Omega$), also known as the mho (that’s ohm spelled backward, given the symbol U). Although the concept of conductance is helpful in developing intuition, it is not used widely;¹¹ most people prefer to talk about resistance instead.

C. Power in resistors

The power dissipated by a resistor (or any other device) is $P = IV$. Using Ohm’s law, you can get the equivalent forms $P = I^2R$ and $P = V^2/R$.

Exercise 1.5. Show that it is not possible to exceed the power rating of a 1/4 watt resistor of resistance greater than 1k, no matter how you connect it, in a circuit operating from a 15 volt battery.

Exercise 1.6. Optional exercise: New York City requires about 10^{10} watts of electrical power, at 115 volts¹² (this is plausible: 10 million people averaging 1 kilowatt each). A heavy power cable might be an inch in diameter. Let’s calculate what will happen if we try to supply the power through a cable 1 foot in diameter made of pure copper. Its resistance is $0.05 \mu\Omega$ (5×10^{-8} ohms) per foot. Calculate (a) the power lost per foot from “ I^2R losses,” (b) the length of cable over which you will lose all 10^{10} watts, and (c) how hot the cable will get, if you know the physics involved ($\sigma = 6 \times 10^{-12} \text{W/K}^4 \text{cm}^2$). If you have done your computations correctly, the result should seem preposterous. What is the solution to this puzzle?

¹¹ Although the elegant *Millman’s theorem* has its admirers: it says that the output voltage from a set of resistors (call them R_i) that are driven from a set of corresponding input voltages (V_i) and connected together at the output is $V_{\text{out}} = (\sum V_i G_i) / \sum G_i$, where the G_i are the conductances ($G_i = 1/R_i$).

¹² Although the “official” line voltage is 120 V $\pm 5\%$, you’ll sometimes see 110 V, 115 V, or 117 V. This loose language is OK (and we use it in this book), because (a) the median voltage at the wall plug is 3 to 5 volts lower, when powering stuff; and (b) the *minimum* wall-plug voltage is 110 V. See ANSI standard C84.1.

¹⁰ With an error, in this case, of just 0.01%.

D. Input and output

Nearly all electronic circuits accept some sort of applied *input* (usually a voltage) and produce some sort of corresponding *output* (which again is often a voltage). For example, an audio amplifier might produce a (varying) output voltage that is 100 times as large as a (similarly varying) input voltage. When describing such an amplifier, we imagine measuring the output voltage for a given applied input voltage. Engineers speak of the *transfer function* \mathbf{H} , the ratio of (measured) output divided by (applied) input; for the audio amplifier above, \mathbf{H} is simply a constant ($\mathbf{H} = 100$). We'll get to amplifiers soon enough, in the next chapter. However, with only resistors we can already look at a very important circuit fragment, the *voltage divider* (which you might call a “de-amplifier”).

1.2.3 Voltage dividers

We now come to the subject of the voltage divider, one of the most widespread electronic circuit fragments. Show us any real-life circuit and we'll show you half a dozen voltage dividers. To put it very simply, a voltage divider is a circuit that, given a certain voltage input, produces a predictable fraction of the input voltage as the output voltage. The simplest voltage divider is shown in Figure 1.6.

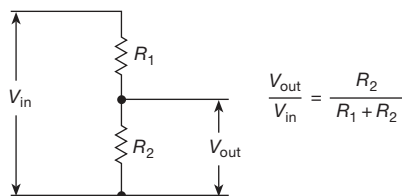


Figure 1.6. Voltage divider. An applied voltage V_{in} results in a (smaller) output voltage V_{out} .

An important word of explanation: when engineers draw a circuit like this, it's generally assumed that the V_{in} on the left is a voltage that you are applying to the circuit, and that the V_{out} on the right is the resulting output voltage (produced by the circuit) that you are measuring (or at least are interested in). You are supposed to know all this (a) because of the convention that signals generally flow from left to right, (b) from the suggestive names (“in,” “out”) of the signals, and (c) from familiarity with circuits like this. This may be confusing at first, but with time it becomes easy.

What is V_{out} ? Well, the current (same everywhere, assuming no “load” on the output; i.e., nothing connected across the output) is

$$I = \frac{V_{in}}{R_1 + R_2}.$$

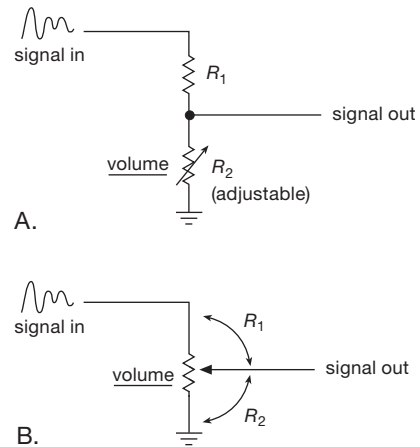


Figure 1.7. An adjustable voltage divider can be made from a fixed and variable resistor, or from a potentiometer. In some contemporary circuits you'll find instead a long series chain of equal-value resistors, with an arrangement of electronic switches that lets you choose any one of the junctions as the output; this sounds much more complicated – but it has the advantage that you can adjust the voltage ratio *electrically* (rather than mechanically).

(We've used the definition of resistance and the series law.) Then, for R_2 ,

$$V_{out} = IR_2 = \frac{R_2}{R_1 + R_2} V_{in}. \quad (1.6)$$

Note that the output voltage is always less than (or equal to) the input voltage; that's why it's called a divider. You could get amplification (more output than input) if one of the resistances were negative. This isn't as crazy as it sounds; it is possible to make devices with negative “incremental” resistances (e.g., the component known as a *tunnel diode*) or even true negative resistances (e.g., the negative-impedance converter that we will talk about later in the book, §6.2.4B). However, these applications are rather specialized and need not concern you now.

Voltage dividers are often used in circuits to generate a particular voltage from a larger fixed (or varying) voltage. For instance, if V_{in} is a varying voltage and R_2 is an adjustable resistor (Figure 1.7A), you have a “volume control”; more simply, the combination R_1R_2 can be made from a single variable resistor, or *potentiometer* (Figure 1.7B). This and similar applications are common, and potentiometers come in a variety of styles, some of which are shown in Figure 1.8.

The humble voltage divider is even more useful, though, as a way of *thinking* about a circuit: the input voltage and upper resistance might represent the output of an amplifier, say, and the lower resistance might represent the input of

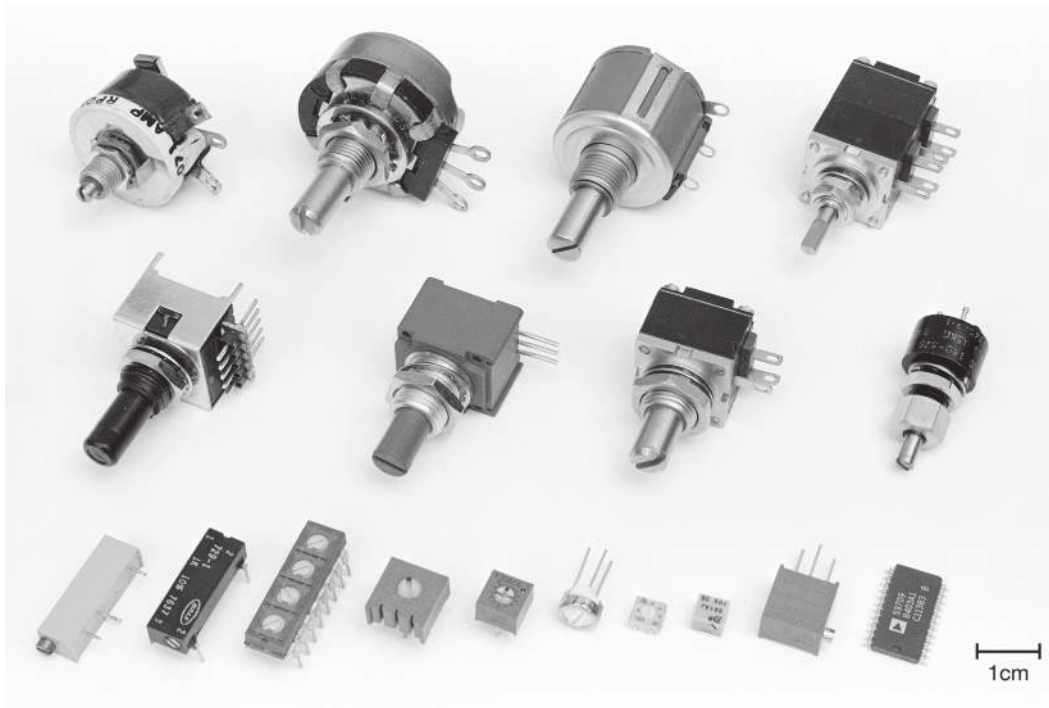


Figure 1.8. Most of the common potentiometer styles are shown here. Top row, left to right (panel mount): power wirewound, “type AB” 2W carbon composition, 10-turn wirewound/plastic hybrid, ganged dual pot. Middle row (panel mount): optical encoder (continuous rotation, 128 cycles per turn), single-turn cermet, single-turn carbon, screw-adjust single-turn locking. Front row (board-mount trimmers): multiturn side-adjust (two styles), quad single-turn, 3/8” (9.5 mm) square single-turn, 1/4” (6.4 mm) square single-turn, 1/4” (6.4 mm) round single-turn, 4 mm square single-turn surface mount, 4 mm square multiturn surface mount, 3/8” (9.5 mm) square multiturn, quad nonvolatile 256-step integrated pot (E²POT) in 24-pin small-outline IC.

the following stage. In this case the voltage-divider equation tells you how much signal gets to the input of that last stage. This will all become clearer after you know about a remarkable fact (Thévenin’s theorem) that will be discussed later. First, though, a short aside on voltage sources and current sources.

1.2.4 Voltage sources and current sources

A perfect *voltage source* is a two-terminal “black box” that maintains a fixed voltage drop across its terminals, regardless of load resistance. This means, for instance, that it must supply a current $I = V/R$ when a resistance R is attached to its terminals. A real voltage source can supply only a finite maximum current, and in addition it generally behaves like a perfect voltage source with a small resistance in series. Obviously, the smaller this series resistance, the better. For example, a standard 9 volt alkaline battery behaves approximately like a perfect 9 volt voltage source in series with a $3\ \Omega$ resistor, and it can provide a maximum

current (when shorted) of 3 amps (which, however, will kill the battery in a few minutes). A voltage source “likes” an open-circuit load and “hates” a short-circuit load, for obvious reasons. (The meaning of “open circuit” and “short circuit” sometimes confuse the beginner: an open circuit has nothing connected to it, whereas a short circuit is a piece of wire bridging the output.) The symbols used to indicate a voltage source are shown in Figure 1.9.

A perfect *current source* is a two-terminal black box that maintains a constant current through the external circuit, regardless of load resistance or applied voltage. To do this it must be capable of supplying any necessary voltage across its terminals. Real current sources (a much-neglected subject in most textbooks) have a limit to the voltage they can provide (called the *output-voltage compliance*, or just *compliance*), and in addition they do not provide absolutely constant output current. A current source “likes” a short-circuit load and “hates” an open-circuit load. The symbols used to indicate a current source are shown in Figure 1.10.

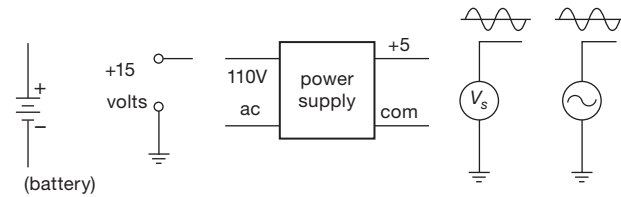


Figure 1.9. Voltage sources can be either steady (dc) or varying (ac).

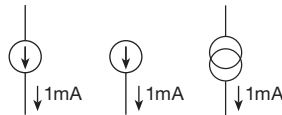


Figure 1.10. Current-source symbols.

A battery is a real-life approximation to a voltage source (there is no analog for a current source). A standard D-size flashlight cell, for instance, has a terminal voltage of 1.5 V, an equivalent series resistance of about 0.25 Ω, and a total energy capacity of about 10,000 watt-seconds (its characteristics gradually deteriorate with use; at the end of its life, the voltage may be about 1.0 V, with an internal series resistance of several ohms). It is easy to construct voltage sources with far better characteristics, as you will learn when we come to the subject of feedback; this is a major topic of Chapter 9. Except in the important class of devices intended for portability, the use of batteries in electronic devices is rare.

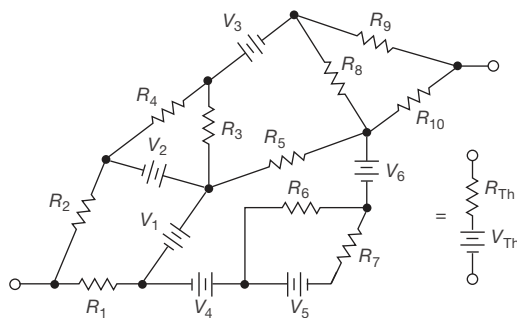


Figure 1.11. The Thévenin equivalent circuit.

1.2.5 Thévenin equivalent circuit

Thévenin's theorem states¹² that any two-terminal network of resistors and voltage sources is equivalent to a single

resistor R in series with a single voltage source V . This is remarkable. Any mess of batteries and resistors can be mimicked with one battery and one resistor (Figure 1.11). (Incidentally, there's another theorem, Norton's theorem, that says you can do the same thing with a current source in parallel with a resistor.)

How do you figure out the Thévenin equivalent R_{Th} and V_{Th} for a given circuit? Easy! V_{Th} is the open-circuit voltage of the Thévenin equivalent circuit; so if the two circuits behave identically, it must also be the open-circuit voltage of the given circuit (which you get by calculation, if you know what the circuit is, or by measurement, if you don't). Then you find R_{Th} by noting that the short-circuit current of the equivalent circuit is V_{Th}/R_{Th} . In other words,

$$V_{Th} = V \text{ (open circuit)},$$

$$R_{Th} = \frac{V \text{ (open circuit)}}{I \text{ (short circuit)}}. \tag{1.7}$$

Let's apply this method to the voltage divider, which must have a Thévenin equivalent:

1. The open-circuit voltage is

$$V = V_{in} \frac{R_2}{R_1 + R_2}.$$

2. The short-circuit current is

$$V_{in}/R_1.$$

So the Thévenin equivalent circuit is a voltage source,

$$V_{Th} = V_{in} \frac{R_2}{R_1 + R_2}, \tag{1.8}$$

in series with a resistor,

$$R_{Th} = \frac{R_1 R_2}{R_1 + R_2}. \tag{1.9}$$

(It is not a coincidence that this happens to be the parallel resistance of R_1 and R_2 . The reason will become clear later.)

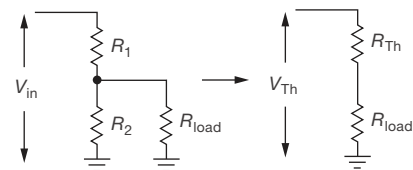


Figure 1.12. Thévenin equivalent of a voltage divider.

From this example it is easy to see that a voltage divider is not a very good battery, in the sense that its output voltage drops severely when a load is attached. As an example, consider Exercise 1.10. You now know everything you need to know to calculate exactly how much the output will

¹² We provide a proof, for those who are interested, in Appendix D.